



# Fairfield Public Schools Enrollment Projections Update 2014

May 1, 2014

FAIRFIELD PUBLIC SCHOOLS  
ENROLLMENT PROJECTIONS UPDATE 2014

---

MAY 1, 2014



TABLE OF CONTENTS

|   |    |
|---|----|
| INTRODUCTION.....   | 2  |
| ENROLLMENT PROJECTION METHODOLOGY .....                     | 2  |
| EXTERNAL FACTORS IMPACTING PROJECTIONS .....                | 7  |
| ENROLLMENT PROJECTIONS – BY DISTRICT .....                  | 8  |
| ENROLLMENT PROJECTIONS –PROJECTIONS BY SCHOOL.....          | 13 |
| APPENDIX A – DETAILED ENROLLMENT PROJECTIONS BY SCHOOL..... | 14 |
| ELEMENTARY SCHOOLS .....                                    | 14 |
| MIDDLE SCHOOLS .....  | 36 |
| HIGH SCHOOLS .....  | 42 |

# INTRODUCTION

---

This report documents the enrollment projections developed for Fairfield Public Schools (FPS) by MGT of America, Inc. MGT developed enrollment projections for the ten-year planning period spanning from 2014-15 to 2023-24 using a cohort survival methodology. The projections indicate that there will be an approximate two percent decrease in district-wide enrollment over the next ten years.

## ENROLLMENT PROJECTION METHODOLOGY

Enrollment projections are an *estimate* of future activity based on the historical data and other relevant information. These numbers can be highly accurate, but it must be remembered that the numbers are still a projection or estimate. During the implementation of any facility planning, it is critical that the district reassess these numbers on a regular basis (at least annually) and adjust plans accordingly.

To identify trends and prepare for sufficient capacity, teaching staff, and materials and supplies, educational leaders use several methods of projecting enrollment. Among the most commonly used models are *Average Percentage Increase*, *Cohort Survival*, *Linear Regression*, and *Student-per-Housing Unit* models. MGT and FPS have chosen to use a cohort survival methodology to develop 10-year projections.

A rule of thumb when forecasting enrollment is that the models should use as many years of historical data as there are years in the projection period. In other words, if the model is projecting enrollment for five years, then five years of historical data should be used. If the model is projecting enrollment for ten years, then ten years of historical data should be used.

## COHORT SURVIVAL MODEL

This model calculates the growth or decline in a grade level over a period of ten years based on the ratio of students who attend each of the previous years, or the “survival rate”. This ratio is then applied to the incoming class to calculate the trends in that class as it “moves” or graduates through the school system. For example, if history shows that between the first and second grades, the classes for the last ten years have grown by an average of 3.5 percent, then the size of incoming classes for the next ten years is calculated by multiplying them by 103.5 percent. If the history shows a declining trend, the multiplying factor would be 100 percent minus the declining trend number.

The determination of future kindergarten enrollment estimates is critical, especially for projections exceeding more than five years. There are many methods of projecting kindergarten enrollment. One model is based on the correlation between historical birth rates (natality rates) and historical kindergarten enrollment. A second model uses a linear regression line based on the historical kindergarten enrollment data. For this study, a different approach was used to project kindergarten enrollment for each school. This approach is presented in detail on pages 5 and 6, *Exhibits 1-4* and *1-5*.

In building the ten-year enrollment projections, MGT calculated all ten years using a cohort survival method. In the development of the first year projections, a cohort model using the district average survival ratio was applied to each school.

For the remaining nine years, at the Elementary and High schools, a cohort model using the individual school level survival ratios was applied to each school. For the Middle schools, a 10-year district average survival ratio was used as the survival rate. The 2014-15 projection was developed as part of an earlier project which generated two year projections. The 2014-15 numbers have been published by the district. For continuity purposes, we used these earlier 2014-15 projections as our first year of the ten-year projections.

## HISTORICAL ENROLLMENT

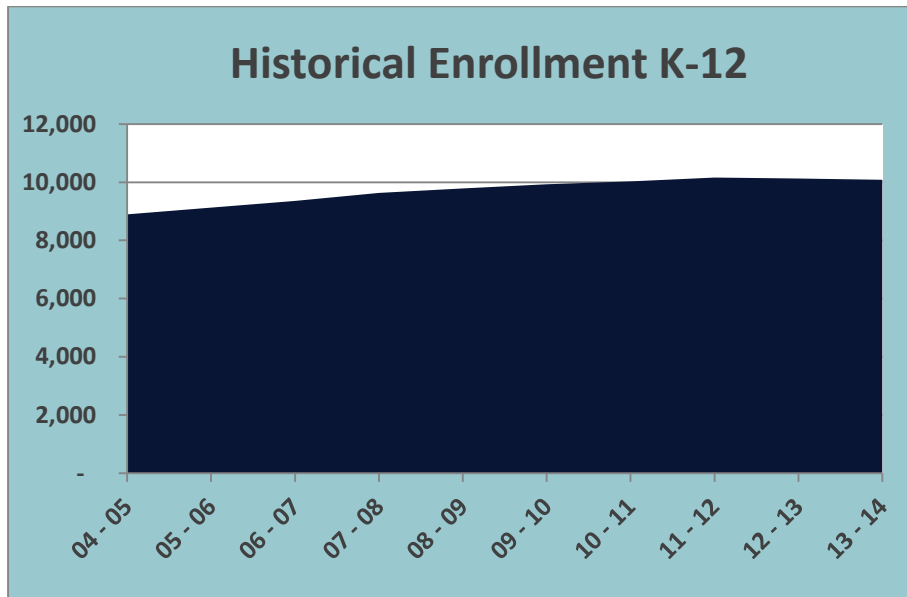
The core body of data used to develop an enrollment projection is historical enrollment. Total enrollment in the Fairfield Public Schools stood at 8,898 students in 2004. Since then, enrollment has increased to 10,088 in 2013. *Exhibit 1-1* details the enrollment history of K-12 students in the district for the past ten years. Historical district enrollment excludes Early Childhood Center (ECC) students. Alternative high school students are included in the 9-12 grade band. *Exhibit 1-2* charts the data shown in *Exhibit 1-1*.

### FAIRFIELD PUBLIC SCHOOLS 1-1 ENROLLMENT HISTORY 2004-2013

| Grades | 04 - 05 | 05 - 06 | 06 - 07 | 07 - 08 | 08 - 09 | 09 - 10 | 10 - 11 | 11 - 12 | 12 - 13 | 13 - 14 |
|--------|---------|---------|---------|---------|---------|---------|---------|---------|---------|---------|
| K      | 762     | 801     | 822     | 736     | 786     | 722     | 770     | 800     | 683     | 722     |
| 1      | 792     | 806     | 806     | 848     | 750     | 798     | 741     | 784     | 842     | 703     |
| 2      | 729     | 784     | 793     | 810     | 843     | 753     | 809     | 735     | 775     | 857     |
| 3      | 772     | 716     | 806     | 822     | 816     | 853     | 760     | 810     | 741     | 777     |
| 4      | 696     | 768     | 731     | 839     | 818     | 826     | 848     | 763     | 819     | 748     |
| 5      | 723     | 689     | 769     | 748     | 845     | 820     | 830     | 852     | 766     | 823     |
| 6      | 658     | 731     | 701     | 775     | 755     | 855     | 824     | 843     | 858     | 777     |
| 7      | 704     | 661     | 726     | 709     | 780     | 766     | 845     | 820     | 853     | 848     |
| 8      | 661     | 705     | 661     | 737     | 729     | 790     | 768     | 859     | 824     | 861     |
| 9      | 661     | 652     | 704     | 660     | 711     | 716     | 779     | 747     | 814     | 732     |
| 10     | 601     | 638     | 618     | 701     | 646     | 690     | 704     | 746     | 724     | 778     |
| 11     | 598     | 586     | 642     | 614     | 686     | 646     | 688     | 703     | 739     | 724     |
| 12     | 541     | 586     | 574     | 636     | 624     | 699     | 660     | 695     | 691     | 738     |
| K-5    | 4,474   | 4,564   | 4,727   | 4,803   | 4,858   | 4,772   | 4,758   | 4,744   | 4,626   | 4,630   |
| 6-8    | 2,023   | 2,097   | 2,088   | 2,221   | 2,264   | 2,411   | 2,437   | 2,522   | 2,535   | 2,486   |
| 9-12   | 2,401   | 2,462   | 2,538   | 2,611   | 2,667   | 2,751   | 2,831   | 2,891   | 2,968   | 2,972   |
| Total  | 8,898   | 9,123   | 9,353   | 9,635   | 9,789   | 9,934   | 10,026  | 10,157  | 10,129  | 10,088  |

SOURCE: FAIRFIELD PUBLIC SCHOOLS, 2014.

EXHIBIT 1-2  
FAIRFIELD PUBLIC SCHOOLS  
HISTORICAL ENROLLMENT  
2004-2013

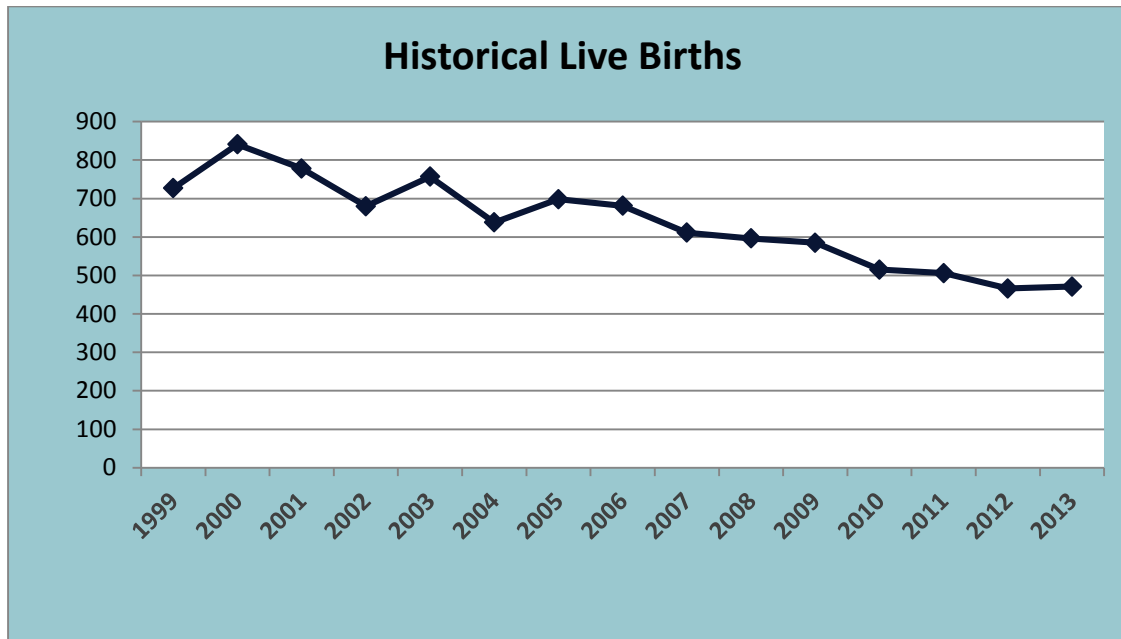


SOURCE: FAIRFIELD PUBLIC SCHOOLS, 2014.

#### LIVE BIRTHS AND KINDERGARTEN ENROLLMENT

A key component to analyzing potential future kindergarten enrollment is to examine live-birth trends in the town and the live-births-to-kindergarten capture rate. A steady or increasing birth rate in the town could lead to an increase in kindergarten enrollment in the district, which would also push enrollment for subsequent grade levels higher. In Fairfield, live births have been declining since 2005. However, the provisional 2013 live birth number does show a slight increase. *Exhibit 1-3* on the following page shows the trend of historical live births for the town. 2012 and 2013 are provisional numbers provided by Connecticut Department of Health.

EXHIBIT 1-3  
TOWN OF FAIRFIELD  
RESIDENT LIVE BIRTHS  
1999-2013



SOURCE: CONNECTICUT DEPARTMENT OF HEALTH, VITAL STATISTICS DIVISION 2014.

Two statistics are critical to understanding the relationship between live births and kindergarten enrollment in the district: the correlation coefficient and the capture rate.

The correlation coefficient calculates the relationship between two series of data. A correlation coefficient of 1 indicates a strong relationship; a correlation coefficient of 0 indicates a weak relationship. For FPS, the correlation coefficient for kindergarten enrollment to live births is 0.842, which indicates a fairly strong relationship and therefore the live-birth rate is a good indicator of future kindergarten enrollment. However, linear regression models project a significant decrease in live births and kindergarteners which would have unrealistically impacted the kindergarten forecast. For this reason, a Kindergarten projection model was developed using the percent change in district Kindergarten students over the past seven years. This methodology more accurately aligns with historical kindergarten enrollment in the district.

The percent change in district kindergarten students was calculated using the data in *Exhibit 1-4*.

EXHIBIT 1-4  
FAIRFIELD PUBLIC SCHOOLS  
KINDERGARTEN STUDENTS PERCENT CHANGE

| District | 2007 | 2013 | % Change | % Change/Year |
|----------|------|------|----------|---------------|
| KG       | 736  | 722  | -1.90%   | -0.27%        |

SOURCE: MGT OF AMERICA, INC., 2014.

This percent change per year was then applied to schools average kindergarten enrollment (last three years) to project the following year's incoming kindergartners. *Exhibit 1-5* demonstrates how the district percent change was applied to two theoretical schools to generate projected kindergartners.

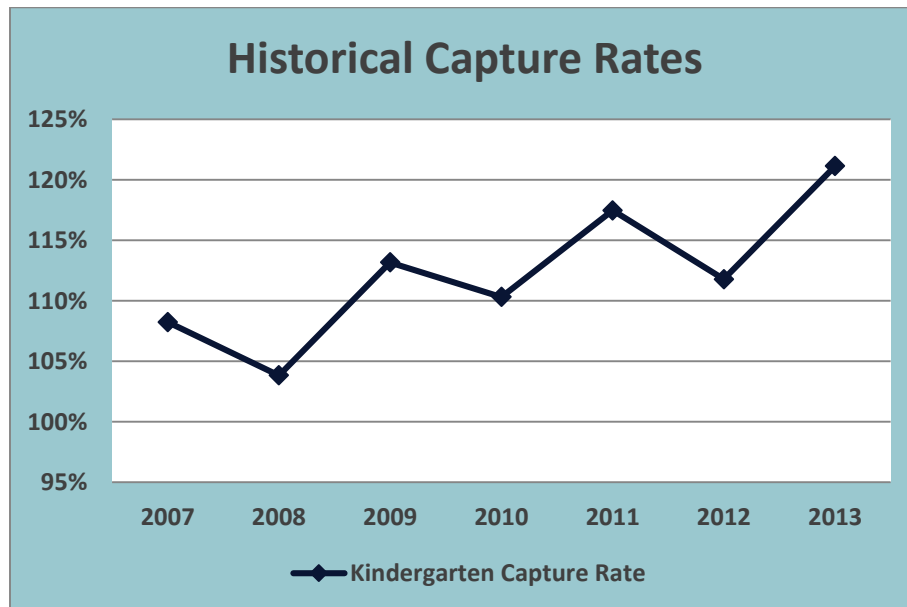
EXHIBIT 1-5  
FAIRFIELD PUBLIC SCHOOLS  
KINDERGARTEN ENROLLMENT PROJECTIONS

| Projections |                         |                               |      |      |      |      |      |       |      |      |      |      |
|-------------|-------------------------|-------------------------------|------|------|------|------|------|-------|------|------|------|------|
|             | 3 Year<br>KG<br>Average | District<br>%Change<br>/ Year | 2014 | 2015 | 2016 | 2017 | 2018 | 2019  | 2020 | 2021 | 2022 | 2023 |
| School A    | 68.33                   | -0.27%                        | 68.1 | 68.0 | 67.8 | 67.6 | 67.4 | 67.2  | 67.0 | 66.9 | 66.7 | 66.5 |
| School B    | 63.00                   | -0.27%                        | 62.8 | 62.7 | 62.5 | 62.3 | 62.2 | 62.00 | 61.8 | 61.6 | 61.5 | 61.3 |

SOURCE: MGT OF AMERICA, INC., 2014.

The capture rate measures the percentage of live births that resulted in kindergarten enrollment five years later. Over the last ten years, the district's kindergarten capture rate has averaged 109.17 percent, and the capture rate shows an overall increasing trend as *Exhibit 1-6* illustrates. This capture rate, in excess of 100 percent, indicates that students are migrating into the community, indicating that live births are not the only factor driving kindergarten enrollment.

EXHIBIT 1-6  
FAIRFIELD PUBLIC SCHOOLS  
HISTORICAL CAPTURE RATES  
2007-2013



SOURCE: MGT OF AMERICA, INC., 2014.

## EXTERNAL FACTORS IMPACTING PROJECTIONS

There are several factors that can affect enrollment projections which may not be captured in the historical data. These factors can cause anomalies in data projections, and are hard to incorporate in a cohort projection model. While discussions with planners and civic leaders can sometimes reveal potential developments that could affect the district's demographics, these impacts are generally speculation at best. Factors that can affect a school's projections could include:

- ♦ In-migration from other districts due to open enrollment
- ♦ In-migration from other districts due to population growth
- ♦ Students leaving or graduating from private schools
- ♦ New industry
- ♦ New housing developments
- ♦ Consolidation of schools
- ♦ Attendance zone adjustments
- ♦ Magnet school programs

While these factors are not incorporated into a cohort survival projection methodology, the district is encouraged to take these factors into consideration for planning purposes.



## ENROLLMENT PROJECTIONS – BY DISTRICT

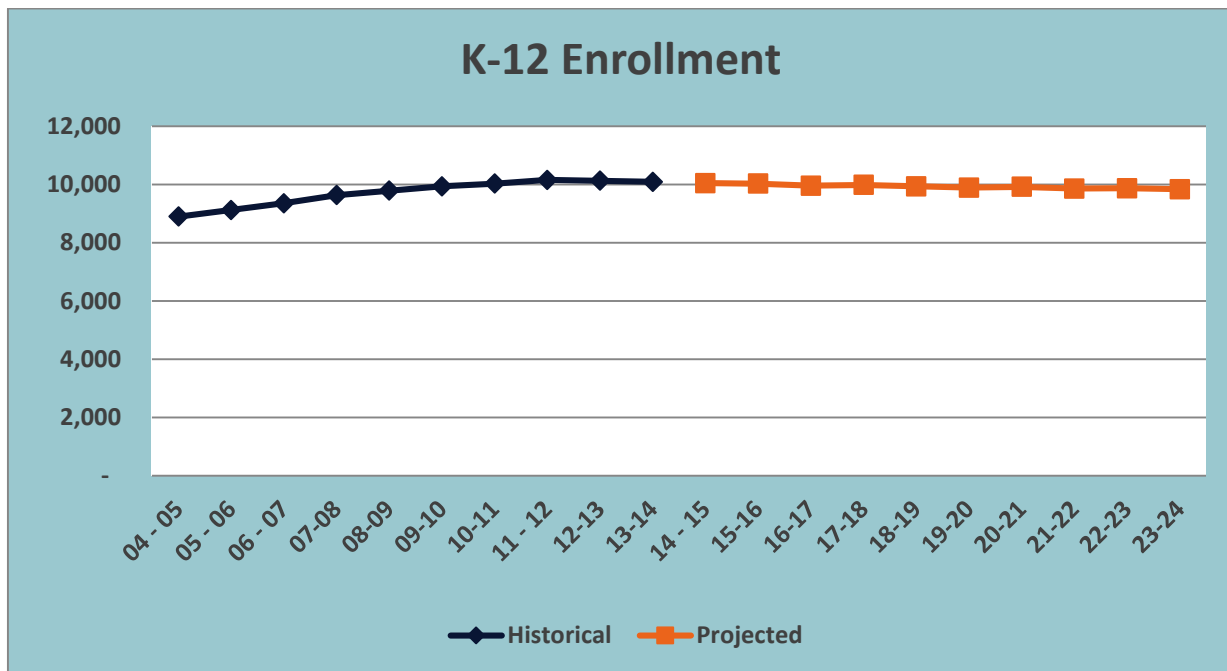
MGT has utilized the methodology described above to forecast enrollment for the district over the next ten years. *Exhibit 1-7* identifies the projected enrollment for the district. *Exhibit 1-8* illustrates the historical and projected enrollment for the entire district.

EXHIBIT 1-7  
FAIRFIELD PUBLIC SCHOOLS  
PROJECTED ENROLLMENT

|      | Current | 14 - 15 | 15 - 16 | 16 - 17 | 17 - 18 | 18 - 19 | 19 - 20 | 20 - 21 | 21 - 22 | 22 - 23 | 23 - 24 |
|------|---------|---------|---------|---------|---------|---------|---------|---------|---------|---------|---------|
| K    | 722     | 723     | 726     | 728     | 726     | 724     | 723     | 723     | 719     | 716     | 715     |
| 1    | 703     | 743     | 753     | 749     | 755     | 750     | 747     | 745     | 743     | 743     | 739     |
| 2    | 857     | 703     | 750     | 754     | 754     | 758     | 752     | 750     | 747     | 741     | 742     |
| 3    | 777     | 868     | 707     | 753     | 760     | 760     | 764     | 764     | 761     | 754     | 750     |
| 4    | 748     | 786     | 876     | 717     | 759     | 765     | 766     | 775     | 772     | 772     | 765     |
| 5    | 823     | 748     | 790     | 883     | 725     | 765     | 772     | 774     | 780     | 778     | 777     |
| 6    | 777     | 832     | 759     | 796     | 887     | 726     | 768     | 766     | 778     | 775     | 772     |
| 7    | 848     | 777     | 833     | 762     | 799     | 889     | 728     | 769     | 766     | 778     | 776     |
| 8    | 861     | 856     | 786     | 842     | 769     | 806     | 897     | 734     | 776     | 774     | 786     |
| 9    | 732     | 805     | 801     | 729     | 806     | 736     | 776     | 871     | 712     | 756     | 759     |
| 10   | 778     | 709     | 775     | 769     | 705     | 781     | 714     | 755     | 845     | 690     | 733     |
| 11   | 724     | 772     | 706     | 771     | 766     | 702     | 776     | 710     | 751     | 839     | 685     |
| 12   | 738     | 724     | 766     | 704     | 774     | 772     | 709     | 780     | 711     | 751     | 839     |
| K-5  | 4,630   | 4,571   | 4,602   | 4,584   | 4,479   | 4,522   | 4,524   | 4,531   | 4,522   | 4,504   | 4,488   |
| 6-8  | 2,486   | 2,465   | 2,378   | 2,400   | 2,455   | 2,421   | 2,393   | 2,269   | 2,320   | 2,327   | 2,334   |
| 9-12 | 2,972   | 3,010   | 3,048   | 2,973   | 3,051   | 2,991   | 2,975   | 3,116   | 3,019   | 3,036   | 3,016   |
| K-12 | 10,088  | 10,046  | 10,028  | 9,957   | 9,985   | 9,934   | 9,892   | 9,916   | 9,861   | 9,867   | 9,838   |

SOURCE: MGT OF AMERICA, INC., 2014.

EXHIBIT 1-8  
FAIRFIELD PUBLIC SCHOOLS  
HISTORICAL AND PROJECTED ENROLLMENT – K-12



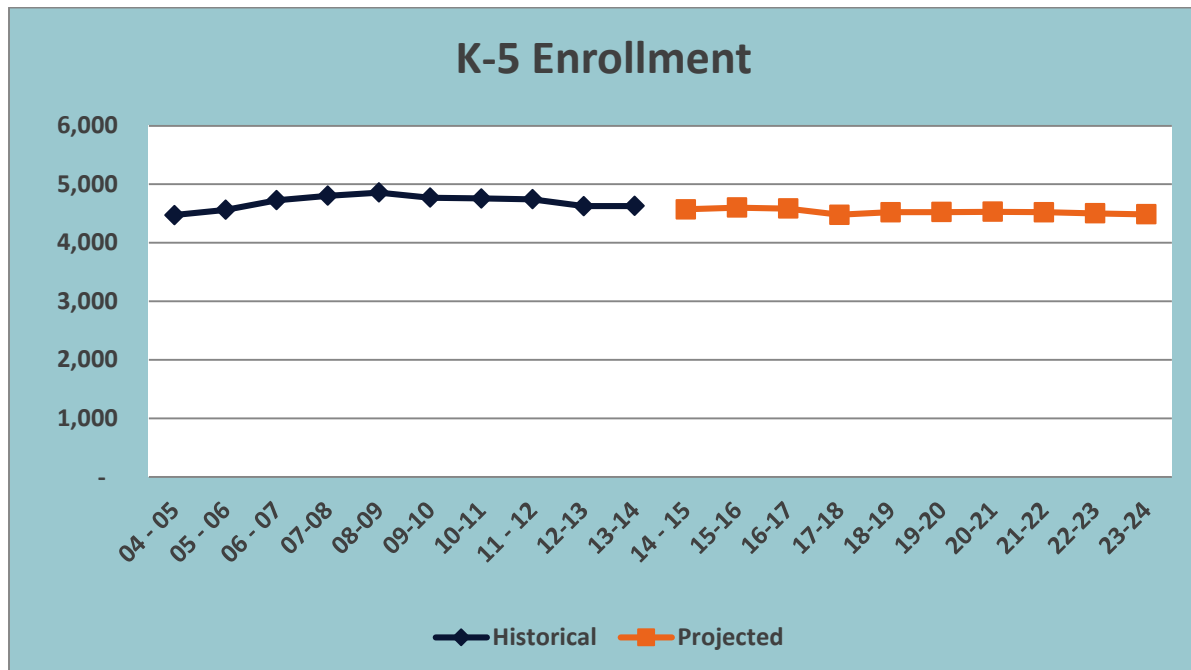
SOURCE: MGT OF AMERICA, INC., 2014.

As the previous *Exhibit 1-7* shows, enrollment across the district is expected to decrease slightly year over year resulting in a two percent decrease in enrollment at the end of the 10-year planning period. This is a reasonable projection given the following:

- ◆ Based on conversations with the town planning department, residential permits have declined rapidly in the recent past due to the town being built out.
- ◆ While new students are migrating into the district, the rate of decline in the birth rate is higher than the rate of in-migration.
- ◆ Live births have been decreasing since 2005, the provisional 2013 live birth number shows a minor increase.
- ◆ MGT developed a conservative approach to projecting kindergarten enrollment which incorporated the percent change in district-wide kindergarten students from 2007-2013.

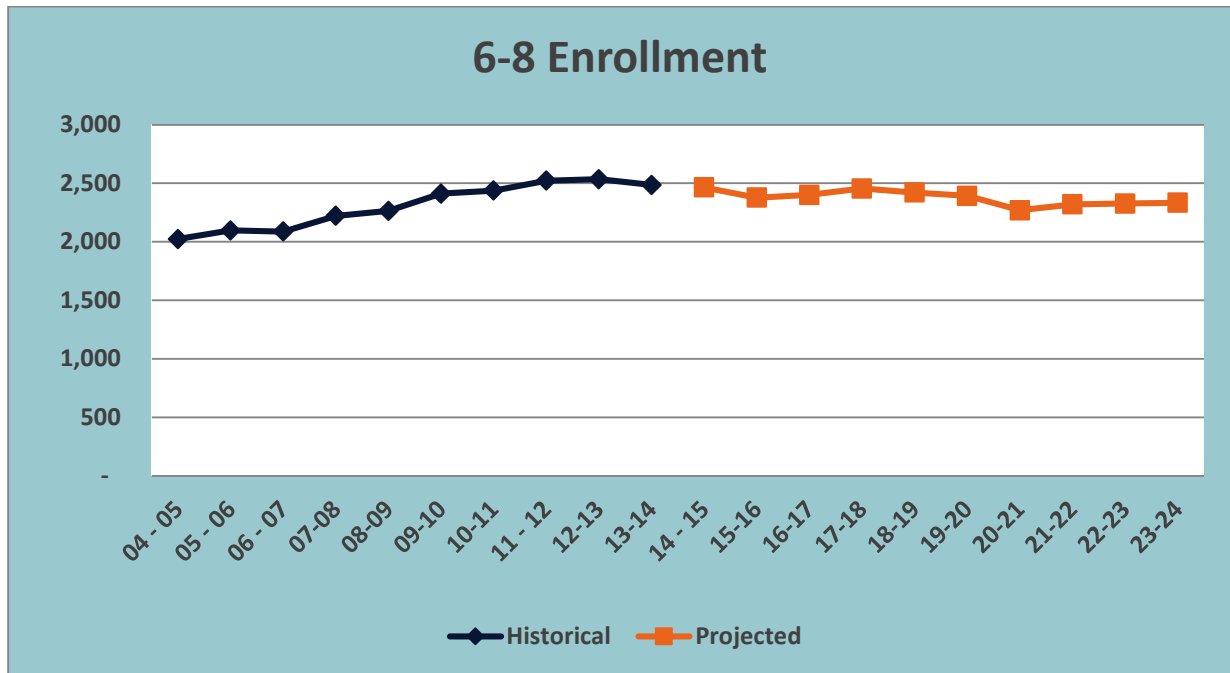
The district is strongly encouraged to revisit these projections on an annual basis and update them to reflect current trends and data. The following *Exhibits 1-9* through *1-11* illustrate the historical and projected enrollment at each grade band.

EXHIBIT 1-9  
FAIRFIELD PUBLIC SCHOOLS  
HISTORICAL AND PROJECTED ENROLLMENT – K-5



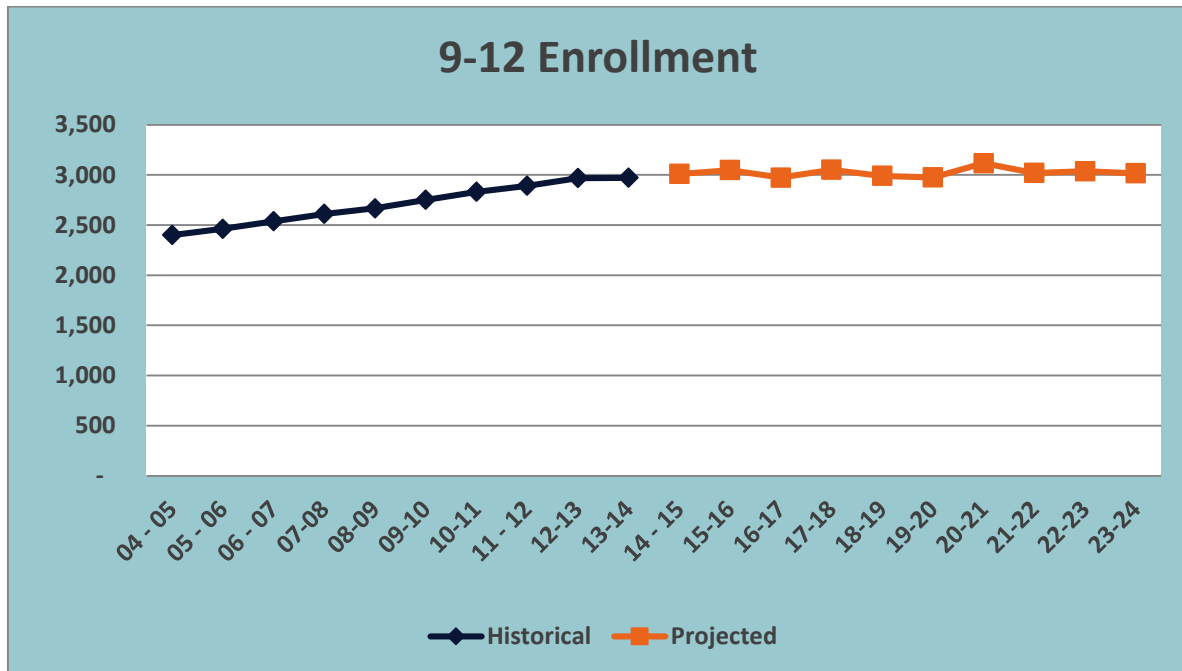
SOURCE: MGT OF AMERICA, INC., 2014.

EXHIBIT 1-10  
FAIRFIELD PUBLIC SCHOOLS  
HISTORICAL AND PROJECTED ENROLLMENT – 6-8



SOURCE: MGT OF AMERICA, INC., 2014.

EXHIBIT 1-11  
FAIRFIELD PUBLIC SCHOOLS  
HISTORICAL AND PROJECTED ENROLLMENT – 9-12



SOURCE: MGT OF AMERICA, INC., 2014.

Exhibit 1-12 summarizes enrollment projections by school for the ten-year planning period.

## ENROLLMENT PROJECTIONS –PROJECTIONS BY SCHOOL

### EXHIBIT 1-12 ENROLLMENT PROJECTIONS BY SCHOOL FAIRFIELD PUBLIC SCHOOLS

| School               | 2013-14       | 14 - 15       | 15-16         | 16-17        | 17-18        | 18-19        | 19-20        | 20-21        | 21-22        | 22-23        | 23-24        |
|----------------------|---------------|---------------|---------------|--------------|--------------|--------------|--------------|--------------|--------------|--------------|--------------|
| Burr ES              | 421           | 409           | 412           | 414          | 419          | 420          | 415          | 415          | 416          | 417          | 416          |
| Dwight ES            | 274           | 274           | 279           | 276          | 263          | 265          | 271          | 273          | 272          | 275          | 275          |
| Holland Hill ES      | 398           | 395           | 418           | 438          | 431          | 425          | 424          | 419          | 414          | 410          | 411          |
| Jennings ES          | 327           | 327           | 323           | 327          | 312          | 333          | 338          | 347          | 347          | 345          | 343          |
| McKinley ES          | 459           | 467           | 475           | 460          | 455          | 464          | 458          | 457          | 460          | 456          | 452          |
| Mill Hill ES         | 429           | 417           | 405           | 400          | 379          | 379          | 389          | 390          | 388          | 384          | 382          |
| North Stratfield ES  | 444           | 427           | 429           | 412          | 402          | 407          | 408          | 412          | 418          | 417          | 416          |
| Osborn Hill ES       | 526           | 519           | 514           | 509          | 502          | 506          | 498          | 490          | 486          | 484          | 481          |
| Riverfield ES        | 398           | 383           | 384           | 382          | 368          | 368          | 370          | 377          | 374          | 371          | 370          |
| Sherman ES           | 457           | 475           | 476           | 491          | 481          | 486          | 484          | 487          | 485          | 485          | 485          |
| Stratfield ES        | 497           | 478           | 487           | 475          | 467          | 469          | 469          | 464          | 462          | 460          | 457          |
| Fairfield Woods MS   | 927           | 920           | 879           | 882          | 907          | 886          | 873          | 855          | 881          | 881          | 849          |
| Ludlowe MS           | 861           | 815           | 798           | 783          | 839          | 826          | 830          | 749          | 754          | 760          | 787          |
| Tomlinson MS         | 698           | 730           | 701           | 735          | 709          | 709          | 690          | 665          | 685          | 686          | 698          |
| Fairfield Warde HS   | 1,460         | 1,444         | 1,518         | 1,462        | 1,500        | 1,477        | 1,464        | 1,529        | 1,457        | 1,501        | 1,480        |
| Fairfield Ludlowe HS | 1,512         | 1,566         | 1,530         | 1,511        | 1,551        | 1,514        | 1,511        | 1,587        | 1,562        | 1,535        | 1,536        |
| <b>K-5</b>           | <b>4,630</b>  | <b>4,571</b>  | <b>4,602</b>  | <b>4,584</b> | <b>4,479</b> | <b>4,522</b> | <b>4,524</b> | <b>4,531</b> | <b>4,522</b> | <b>4,504</b> | <b>4,488</b> |
| <b>6-8</b>           | <b>2,486</b>  | <b>2,465</b>  | <b>2,378</b>  | <b>2,400</b> | <b>2,455</b> | <b>2,421</b> | <b>2,393</b> | <b>2,269</b> | <b>2,320</b> | <b>2,327</b> | <b>2,334</b> |
| <b>9-12</b>          | <b>2,972</b>  | <b>3,010</b>  | <b>3,048</b>  | <b>2,973</b> | <b>3,051</b> | <b>2,991</b> | <b>2,975</b> | <b>3,116</b> | <b>3,019</b> | <b>3,036</b> | <b>3,016</b> |
| <b>K-12</b>          | <b>10,088</b> | <b>10,046</b> | <b>10,028</b> | <b>9,957</b> | <b>9,985</b> | <b>9,934</b> | <b>9,892</b> | <b>9,916</b> | <b>9,861</b> | <b>9,867</b> | <b>9,838</b> |

\*EXCLUDES ECC STUDENTS. ALTERNATIVE STUDENTS ARE INCLUDED WITH THE HIGH SCHOOLS AND INCLUDED WITH THE 9-12 GRADE BAND.

SOURCE: MGT OF AMERICA, INC., 2014.

## APPENDIX A – DETAILED ENROLLMENT PROJECTIONS BY SCHOOL

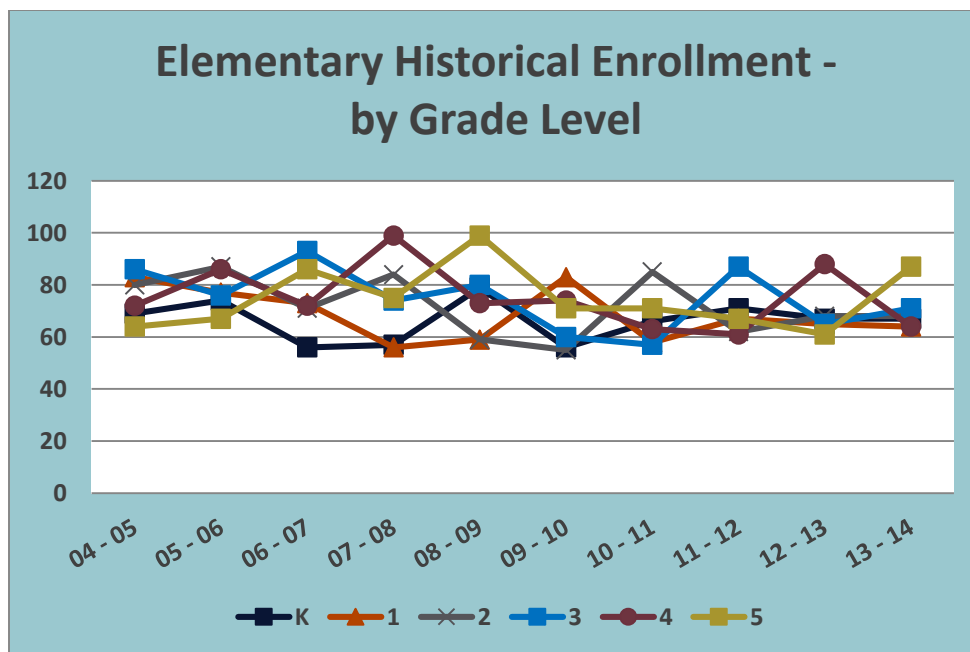
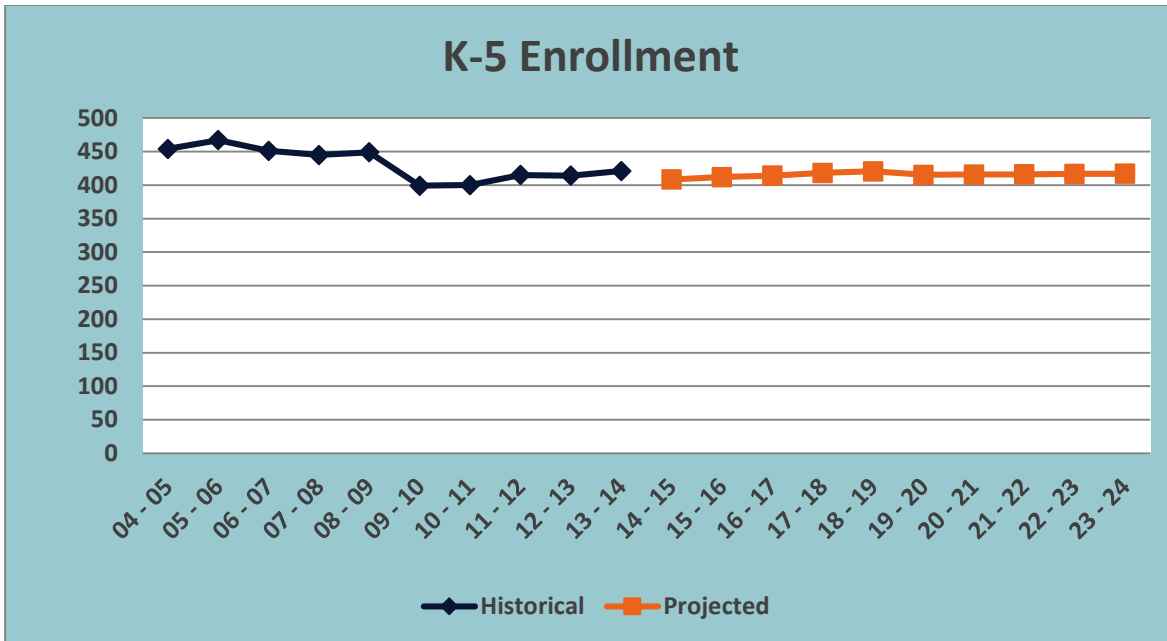
### ELEMENTARY SCHOOLS BURR ELEMENTARY

#### ENROLLMENT HISTORY – 10 YEARS

| HISTORICAL ENROLLMENT |            |            |            |            |            |            |            |            |            |            |
|-----------------------|------------|------------|------------|------------|------------|------------|------------|------------|------------|------------|
| BURR ES               | 04 - 05    | 05 - 06    | 06 - 07    | 07-08      | 08-09      | 09-10      | 10-11      | 11 - 12    | 12-13      | 13-14      |
| K                     | 69         | 74         | 56         | 57         | 79         | 56         | 66         | 71         | 67         | 67         |
| 1                     | 83         | 77         | 73         | 56         | 59         | 83         | 58         | 67         | 65         | 64         |
| 2                     | 80         | 87         | 71         | 84         | 59         | 55         | 85         | 62         | 68         | 68         |
| 3                     | 86         | 76         | 93         | 74         | 80         | 60         | 57         | 87         | 65         | 71         |
| 4                     | 72         | 86         | 72         | 99         | 73         | 74         | 63         | 61         | 88         | 64         |
| 5                     | 64         | 67         | 86         | 75         | 99         | 71         | 71         | 67         | 61         | 87         |
| <b>K-5 Total</b>      | <b>454</b> | <b>467</b> | <b>451</b> | <b>445</b> | <b>449</b> | <b>399</b> | <b>400</b> | <b>415</b> | <b>414</b> | <b>421</b> |

#### ENROLLMENT PROJECTIONS – 10 YEARS

| PROJECTED ENROLLMENT |            |            |            |            |            |            |            |            |            |            |
|----------------------|------------|------------|------------|------------|------------|------------|------------|------------|------------|------------|
| BURR ES              | 14 - 15    | 15-16      | 16-17      | 17-18      | 18-19      | 19-20      | 20-21      | 21-22      | 22-23      | 23-24      |
| K                    | 71         | 68         | 68         | 68         | 67         | 67         | 67         | 67         | 67         | 66         |
| 1                    | 69         | 66         | 65         | 66         | 67         | 67         | 67         | 67         | 68         | 67         |
| 2                    | 64         | 71         | 69         | 68         | 68         | 69         | 70         | 69         | 69         | 70         |
| 3                    | 69         | 67         | 74         | 72         | 70         | 69         | 70         | 72         | 70         | 70         |
| 4                    | 72         | 69         | 68         | 76         | 72         | 71         | 70         | 71         | 73         | 71         |
| 5                    | 64         | 71         | 70         | 69         | 76         | 72         | 71         | 70         | 70         | 72         |
| <b>K-5 Total</b>     | <b>409</b> | <b>412</b> | <b>414</b> | <b>419</b> | <b>420</b> | <b>415</b> | <b>415</b> | <b>416</b> | <b>417</b> | <b>416</b> |





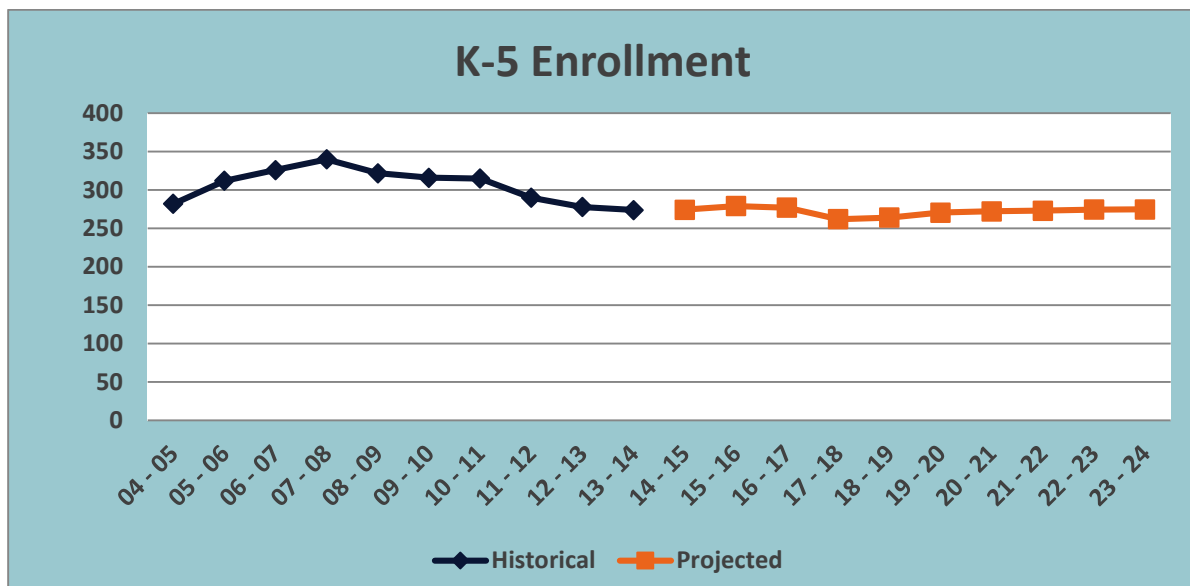
## DWIGHT ELEMENTARY

### ENROLLMENT HISTORY – 10 YEARS

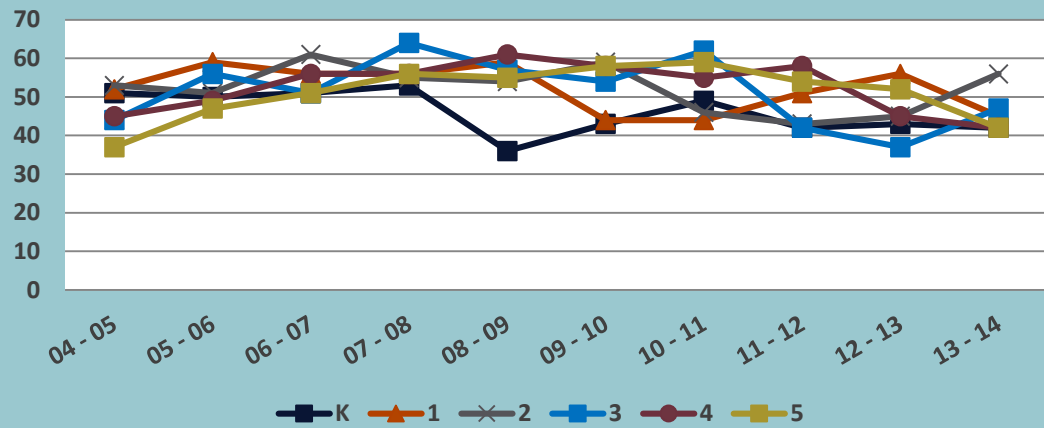
| HISTORICAL ENROLLMENT |            |            |            |            |            |            |            |            |            |            |
|-----------------------|------------|------------|------------|------------|------------|------------|------------|------------|------------|------------|
| DWIGHT                | 04 - 05    | 05 - 06    | 06 - 07    | 07-08      | 08-09      | 09-10      | 10-11      | 11 - 12    | 12-13      | 13-14      |
| K                     | 51         | 50         | 51         | 53         | 36         | 43         | 49         | 42         | 43         | 42         |
| 1                     | 52         | 59         | 56         | 56         | 59         | 44         | 44         | 51         | 56         | 45         |
| 2                     | 53         | 51         | 61         | 55         | 54         | 59         | 46         | 43         | 45         | 56         |
| 3                     | 44         | 56         | 51         | 64         | 57         | 54         | 62         | 42         | 37         | 47         |
| 4                     | 45         | 49         | 56         | 56         | 61         | 58         | 55         | 58         | 45         | 42         |
| 5                     | 37         | 47         | 51         | 56         | 55         | 58         | 59         | 54         | 52         | 42         |
| <b>K-5 Total</b>      | <b>282</b> | <b>312</b> | <b>326</b> | <b>340</b> | <b>322</b> | <b>316</b> | <b>315</b> | <b>290</b> | <b>278</b> | <b>274</b> |

### ENROLLMENT PROJECTIONS – 10 YEARS

| PROJECTED ENROLLMENT |            |            |            |            |            |            |            |            |            |            |
|----------------------|------------|------------|------------|------------|------------|------------|------------|------------|------------|------------|
| DWIGHT               | 14 - 15    | 15-16      | 16-17      | 17-18      | 18-19      | 19-20      | 20-21      | 21-22      | 22-23      | 23-24      |
| K                    | 40         | 42         | 42         | 42         | 42         | 42         | 42         | 41         | 41         | 41         |
| 1                    | 43         | 48         | 48         | 47         | 47         | 47         | 47         | 47         | 47         | 47         |
| 2                    | 45         | 41         | 45         | 47         | 46         | 46         | 46         | 46         | 46         | 46         |
| 3                    | 57         | 43         | 38         | 44         | 46         | 45         | 46         | 46         | 46         | 46         |
| 4                    | 47         | 62         | 45         | 40         | 46         | 47         | 47         | 47         | 48         | 48         |
| 5                    | 42         | 43         | 58         | 43         | 38         | 44         | 45         | 45         | 47         | 47         |
| <b>K-5 Total</b>     | <b>274</b> | <b>279</b> | <b>276</b> | <b>263</b> | <b>265</b> | <b>271</b> | <b>273</b> | <b>272</b> | <b>275</b> | <b>275</b> |



## Elementary Historical Enrollment - by Grade Level



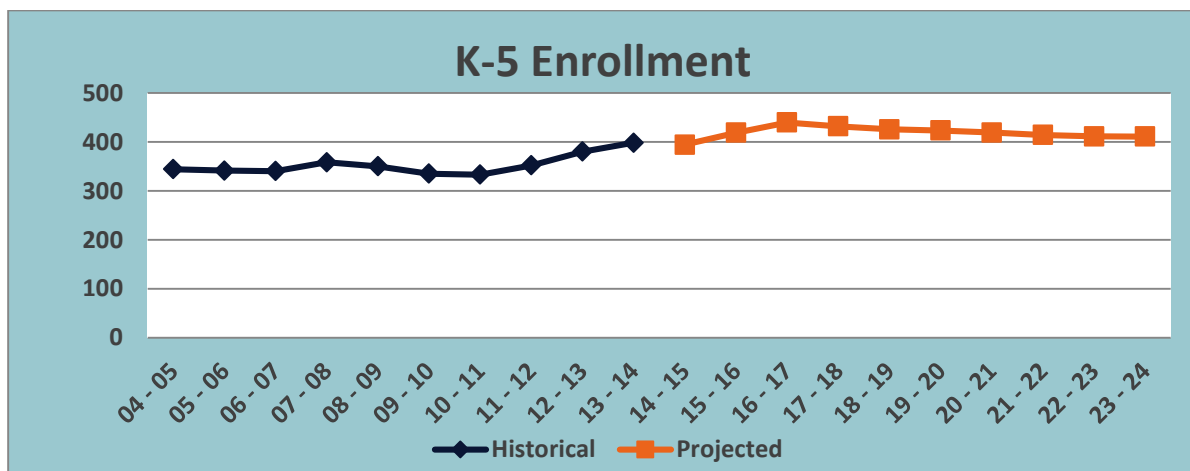
## HOLLAND HILL ELEMENTARY

### ENROLLMENT HISTORY – 10 YEARS

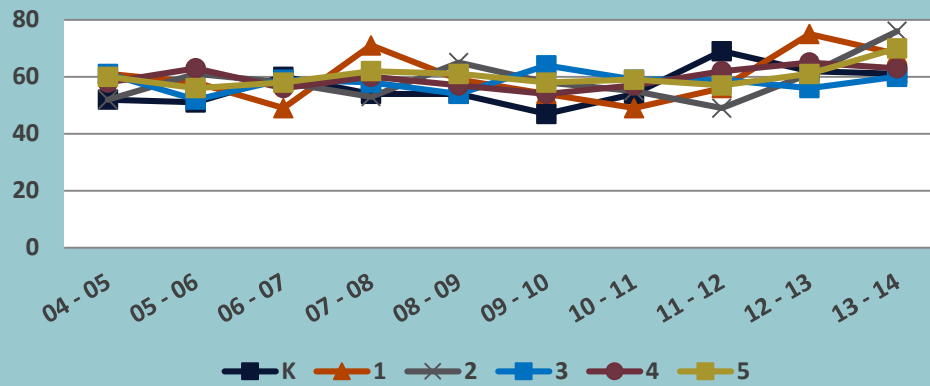
| HISTORICAL ENROLLMENT |         |         |         |       |       |       |       |         |       |       |
|-----------------------|---------|---------|---------|-------|-------|-------|-------|---------|-------|-------|
| HOLLAND HILL ES       | 04 - 05 | 05 - 06 | 06 - 07 | 07-08 | 08-09 | 09-10 | 10-11 | 11 - 12 | 12-13 | 13-14 |
| K                     | 52      | 51      | 60      | 54    | 54    | 47    | 54    | 69      | 62    | 61    |
| 1                     | 61      | 58      | 49      | 71    | 59    | 54    | 49    | 56      | 75    | 68    |
| 2                     | 52      | 61      | 58      | 53    | 65    | 58    | 55    | 49      | 61    | 76    |
| 3                     | 61      | 52      | 59      | 58    | 54    | 64    | 59    | 59      | 56    | 60    |
| 4                     | 58      | 63      | 56      | 60    | 57    | 54    | 57    | 62      | 65    | 63    |
| 5                     | 60      | 56      | 58      | 62    | 61    | 58    | 59    | 57      | 61    | 70    |
| K-5 Total             | 344     | 341     | 340     | 358   | 350   | 335   | 333   | 352     | 380   | 398   |

### ENROLLMENT PROJECTIONS – 10 YEARS

| PROJECTED ENROLLMENT |         |       |       |       |       |       |       |       |       |       |
|----------------------|---------|-------|-------|-------|-------|-------|-------|-------|-------|-------|
| HOLLAND HILL ES      | 14 - 15 | 15-16 | 16-17 | 17-18 | 18-19 | 19-20 | 20-21 | 21-22 | 22-23 | 23-24 |
| K                    | 63      | 64    | 63    | 63    | 63    | 63    | 63    | 63    | 62    | 62    |
| 1                    | 63      | 69    | 68    | 68    | 67    | 67    | 68    | 67    | 67    | 67    |
| 2                    | 68      | 66    | 71    | 70    | 69    | 67    | 68    | 69    | 67    | 68    |
| 3                    | 77      | 72    | 70    | 75    | 73    | 72    | 69    | 69    | 70    | 69    |
| 4                    | 61      | 85    | 79    | 73    | 77    | 75    | 73    | 71    | 72    | 72    |
| 5                    | 63      | 62    | 87    | 82    | 76    | 80    | 78    | 75    | 72    | 73    |
| K-5 Total            | 395     | 418   | 438   | 431   | 425   | 424   | 419   | 414   | 410   | 411   |



## Elementary Historical Enrollment - by Grade Level



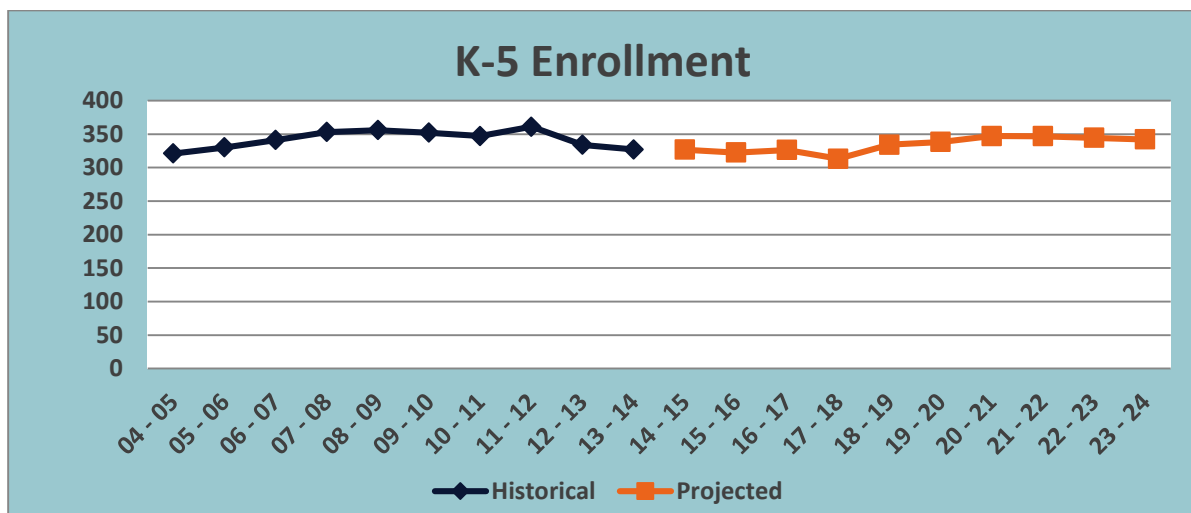
## JENNINGS ELEMENTARY

### ENROLLMENT HISTORY – 10 YEARS

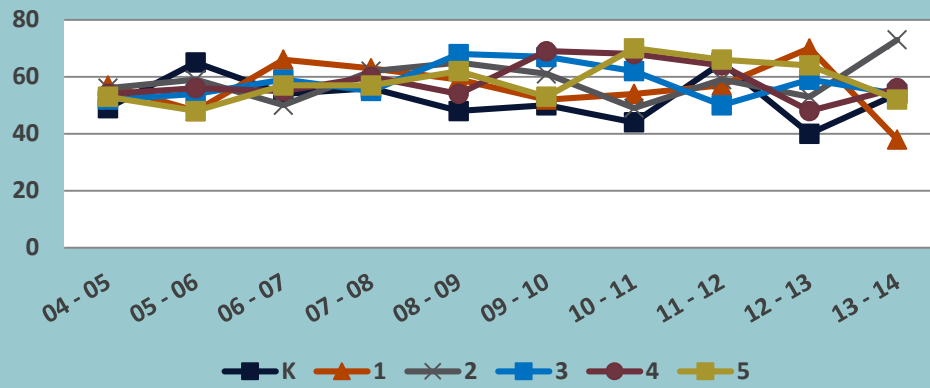
| HISTORICAL ENROLLMENT |            |            |            |            |            |            |            |            |            |            |
|-----------------------|------------|------------|------------|------------|------------|------------|------------|------------|------------|------------|
| JENNINGS<br>ES        | 04 - 05    | 05 - 06    | 06 - 07    | 07-08      | 08-09      | 09-10      | 10-11      | 11 - 12    | 12-13      | 13-14      |
| <b>K</b>              | 49         | 65         | 54         | 56         | 48         | 50         | 44         | 65         | 40         | 54         |
| <b>1</b>              | 57         | 48         | 66         | 63         | 59         | 52         | 54         | 57         | 70         | 38         |
| <b>2</b>              | 56         | 59         | 50         | 62         | 65         | 61         | 49         | 59         | 53         | 73         |
| <b>3</b>              | 52         | 54         | 59         | 55         | 68         | 67         | 62         | 50         | 59         | 54         |
| <b>4</b>              | 54         | 56         | 55         | 60         | 54         | 69         | 68         | 64         | 48         | 56         |
| <b>5</b>              | 53         | 48         | 57         | 57         | 62         | 53         | 70         | 66         | 64         | 52         |
| <b>K-5 Total</b>      | <b>321</b> | <b>330</b> | <b>341</b> | <b>353</b> | <b>356</b> | <b>352</b> | <b>347</b> | <b>361</b> | <b>334</b> | <b>327</b> |

### ENROLLMENT PROJECTIONS – 10 YEARS

| PROJECTED ENROLLMENT |            |            |            |            |            |            |            |            |            |            |
|----------------------|------------|------------|------------|------------|------------|------------|------------|------------|------------|------------|
| JENNINGS<br>ES       | 14 - 15    | 15-16      | 16-17      | 17-18      | 18-19      | 19-20      | 20-21      | 21-22      | 22-23      | 23-24      |
| <b>K</b>             | 49         | 53         | 53         | 52         | 52         | 52         | 52         | 52         | 52         | 52         |
| <b>1</b>             | 56         | 50         | 58         | 58         | 58         | 57         | 57         | 57         | 56         | 56         |
| <b>2</b>             | 38         | 55         | 51         | 58         | 58         | 58         | 57         | 58         | 57         | 56         |
| <b>3</b>             | 74         | 38         | 55         | 51         | 59         | 60         | 61         | 59         | 59         | 59         |
| <b>4</b>             | 54         | 70         | 38         | 55         | 51         | 59         | 60         | 60         | 60         | 60         |
| <b>5</b>             | 56         | 57         | 72         | 38         | 55         | 52         | 60         | 61         | 61         | 60         |
| <b>K-5 Total</b>     | <b>327</b> | <b>323</b> | <b>327</b> | <b>312</b> | <b>333</b> | <b>338</b> | <b>347</b> | <b>347</b> | <b>345</b> | <b>343</b> |



## Elementary Historical Enrollment - by Grade Level



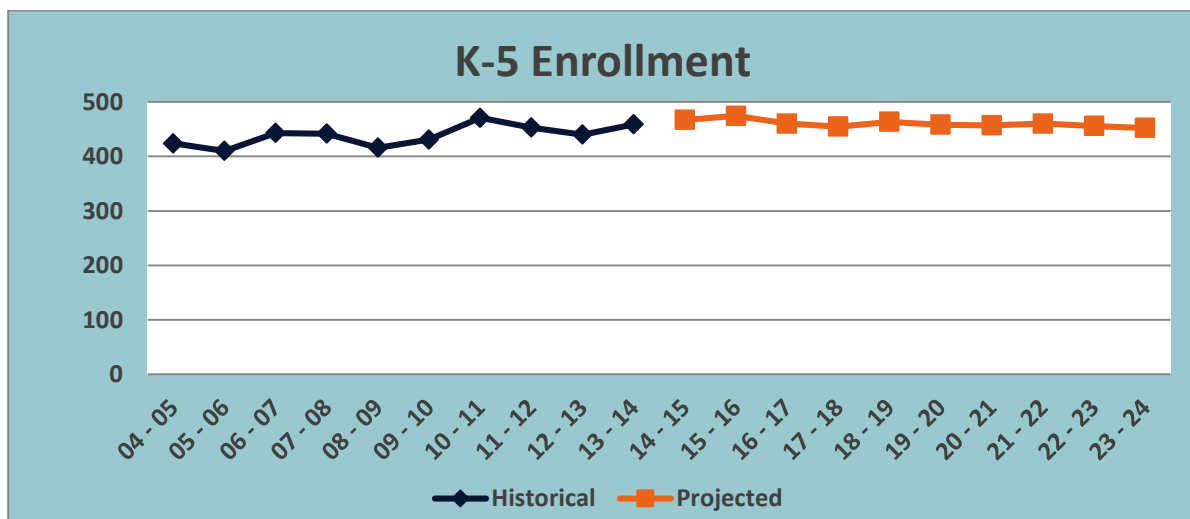
## MCKINLEY ELEMENTARY

### ENROLLMENT HISTORY – 10 YEARS

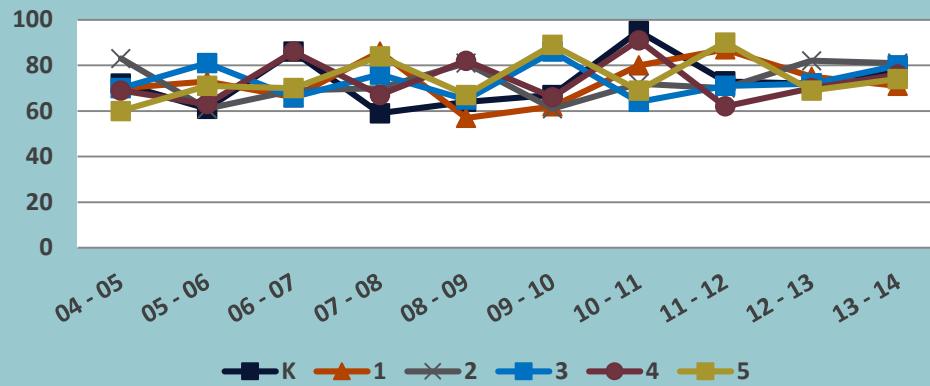
| HISTORICAL ENROLLMENT |            |            |            |            |            |            |            |            |            |            |
|-----------------------|------------|------------|------------|------------|------------|------------|------------|------------|------------|------------|
| MICKINLEY ES          | 04 - 05    | 05 - 06    | 06 - 07    | 07-08      | 08-09      | 09-10      | 10-11      | 11 - 12    | 12-13      | 13-14      |
| <b>K</b>              | 72         | 61         | 86         | 59         | 64         | 67         | 95         | 73         | 72         | 77         |
| <b>1</b>              | 70         | 73         | 66         | 86         | 57         | 62         | 80         | 87         | 75         | 71         |
| <b>2</b>              | 83         | 61         | 69         | 70         | 81         | 61         | 72         | 70         | 82         | 81         |
| <b>3</b>              | 70         | 81         | 66         | 76         | 65         | 86         | 64         | 71         | 72         | 80         |
| <b>4</b>              | 69         | 63         | 86         | 67         | 82         | 66         | 91         | 62         | 70         | 76         |
| <b>5</b>              | 60         | 71         | 70         | 84         | 67         | 89         | 69         | 90         | 69         | 74         |
| <b>K-5 Total</b>      | <b>424</b> | <b>410</b> | <b>443</b> | <b>442</b> | <b>416</b> | <b>431</b> | <b>471</b> | <b>453</b> | <b>440</b> | <b>459</b> |

### ENROLLMENT PROJECTIONS – 10 YEARS

| PROJECTED ENROLLMENT |            |            |            |            |            |            |            |            |            |            |
|----------------------|------------|------------|------------|------------|------------|------------|------------|------------|------------|------------|
| MICKINLEY ES         | 14 - 15    | 15-16      | 16-17      | 17-18      | 18-19      | 19-20      | 20-21      | 21-22      | 22-23      | 23-24      |
| <b>K</b>             | 78         | 74         | 73         | 73         | 73         | 73         | 73         | 72         | 72         | 72         |
| <b>1</b>             | 79         | 79         | 72         | 76         | 75         | 74         | 73         | 74         | 74         | 73         |
| <b>2</b>             | 71         | 80         | 76         | 73         | 78         | 75         | 75         | 74         | 73         | 73         |
| <b>3</b>             | 82         | 71         | 80         | 77         | 74         | 78         | 77         | 77         | 76         | 75         |
| <b>4</b>             | 81         | 83         | 71         | 81         | 78         | 76         | 80         | 79         | 78         | 77         |
| <b>5</b>             | 76         | 88         | 88         | 75         | 86         | 82         | 79         | 84         | 83         | 82         |
| <b>K-5 Total</b>     | <b>467</b> | <b>475</b> | <b>460</b> | <b>455</b> | <b>464</b> | <b>458</b> | <b>457</b> | <b>460</b> | <b>456</b> | <b>452</b> |



## Elementary Historical Enrollment - by Grade Level





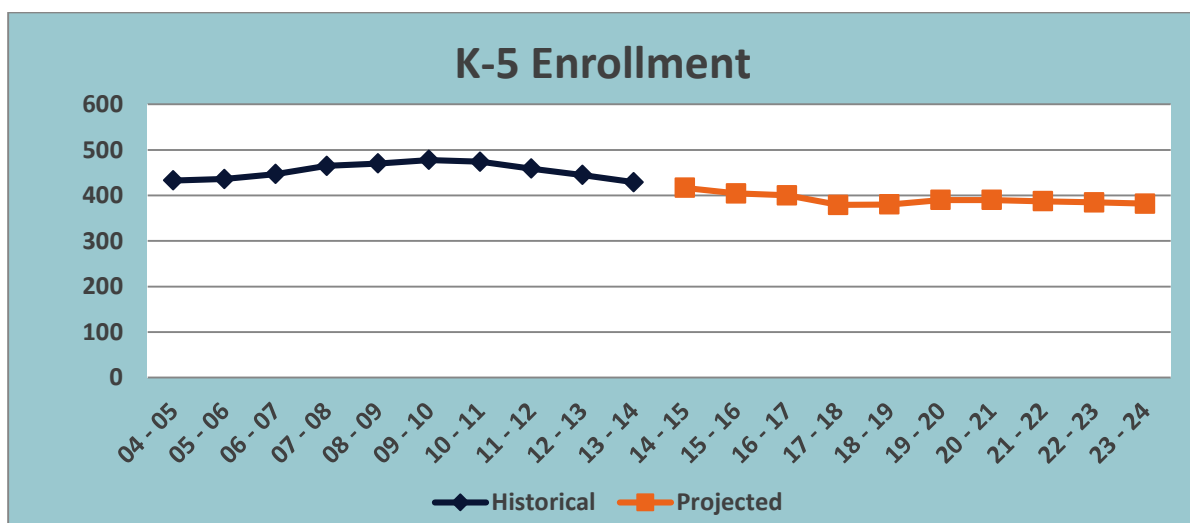
## MILL HILL ELEMENTARY

### ENROLLMENT HISTORY – 10 YEARS

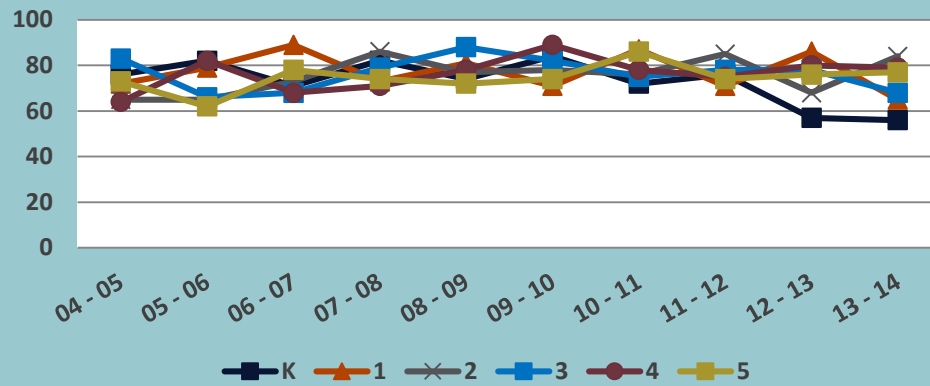
| HISTORICAL ENROLLMENT |            |            |            |            |            |            |            |            |            |            |
|-----------------------|------------|------------|------------|------------|------------|------------|------------|------------|------------|------------|
| MILL HILL ES          | 04 - 05    | 05 - 06    | 06 - 07    | 07-08      | 08-09      | 09-10      | 10-11      | 11 - 12    | 12-13      | 13-14      |
| <b>K</b>              | 76         | 82         | 71         | 82         | 74         | 84         | 72         | 76         | 57         | 56         |
| <b>1</b>              | 72         | 79         | 89         | 73         | 81         | 71         | 87         | 71         | 86         | 65         |
| <b>2</b>              | 65         | 65         | 73         | 86         | 77         | 78         | 76         | 85         | 68         | 84         |
| <b>3</b>              | 83         | 66         | 68         | 79         | 88         | 82         | 75         | 78         | 78         | 68         |
| <b>4</b>              | 64         | 82         | 68         | 71         | 78         | 89         | 78         | 75         | 80         | 79         |
| <b>5</b>              | 73         | 62         | 78         | 74         | 72         | 74         | 86         | 74         | 76         | 77         |
| <b>K-5 Total</b>      | <b>433</b> | <b>436</b> | <b>447</b> | <b>465</b> | <b>470</b> | <b>478</b> | <b>474</b> | <b>459</b> | <b>445</b> | <b>429</b> |

### ENROLLMENT PROJECTIONS – 10 YEARS

| PROJECTED ENROLLMENT |            |            |            |            |            |            |            |            |            |            |
|----------------------|------------|------------|------------|------------|------------|------------|------------|------------|------------|------------|
| MILL HILL ES         | 14 - 15    | 15-16      | 16-17      | 17-18      | 18-19      | 19-20      | 20-21      | 21-22      | 22-23      | 23-24      |
| <b>K</b>             | 61         | 63         | 62         | 62         | 62         | 62         | 62         | 62         | 61         | 61         |
| <b>1</b>             | 58         | 70         | 68         | 67         | 65         | 65         | 64         | 65         | 64         | 64         |
| <b>2</b>             | 65         | 56         | 68         | 68         | 66         | 65         | 64         | 63         | 63         | 63         |
| <b>3</b>             | 85         | 62         | 55         | 66         | 67         | 66         | 66         | 65         | 64         | 64         |
| <b>4</b>             | 69         | 86         | 63         | 55         | 66         | 67         | 67         | 67         | 66         | 65         |
| <b>5</b>             | 79         | 68         | 84         | 61         | 53         | 64         | 67         | 66         | 66         | 65         |
| <b>K-5 Total</b>     | <b>417</b> | <b>405</b> | <b>400</b> | <b>379</b> | <b>379</b> | <b>389</b> | <b>390</b> | <b>388</b> | <b>384</b> | <b>382</b> |



## Elementary Historical Enrollment - by Grade Level



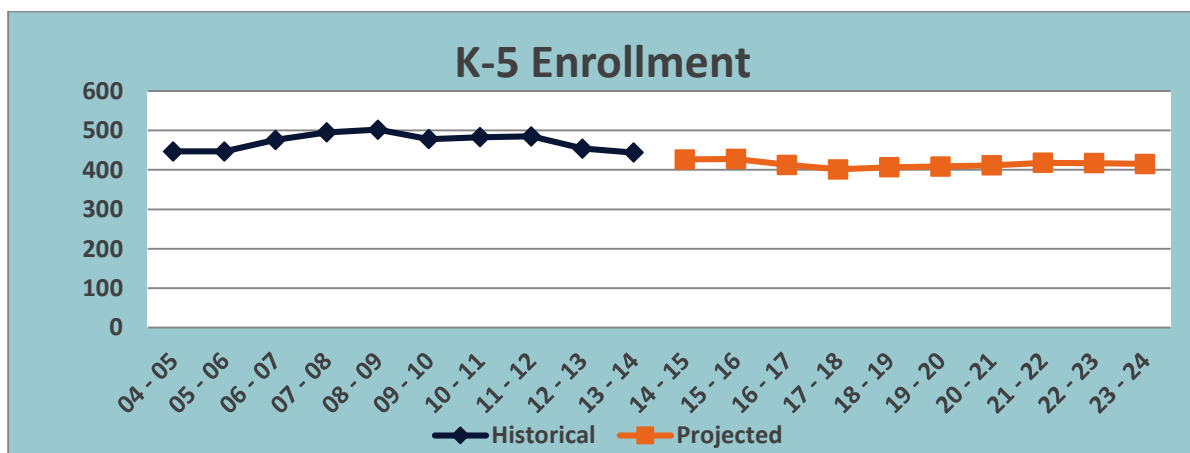
## NORTH STRATFIELD ELEMENTARY

### ENROLLMENT HISTORY – 10 YEARS

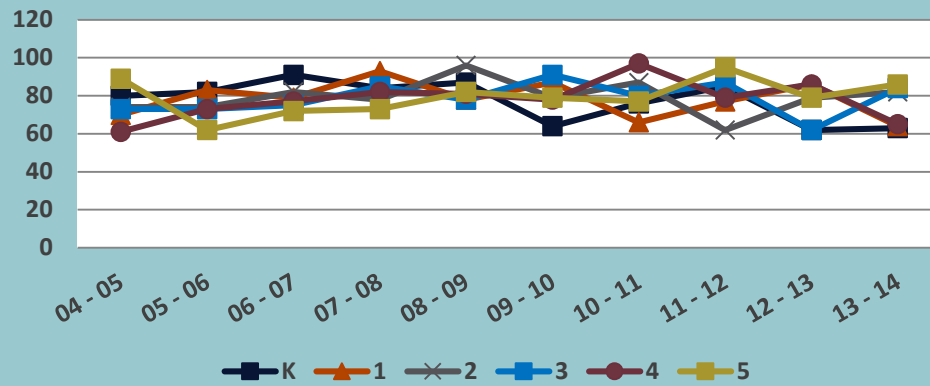
| HISTORICAL ENROLLMENT |         |         |         |       |       |       |       |         |       |       |
|-----------------------|---------|---------|---------|-------|-------|-------|-------|---------|-------|-------|
| NORTH STRATFIELD ES   | 04 - 05 | 05 - 06 | 06 - 07 | 07-08 | 08-09 | 09-10 | 10-11 | 11 - 12 | 12-13 | 13-14 |
| K                     | 80      | 82      | 91      | 84    | 87    | 64    | 76    | 85      | 62    | 63    |
| 1                     | 70      | 83      | 79      | 93    | 78    | 87    | 66    | 77      | 86    | 64    |
| 2                     | 74      | 74      | 82      | 78    | 96    | 79    | 87    | 62      | 79    | 82    |
| 3                     | 73      | 73      | 75      | 85    | 78    | 91    | 80    | 87      | 62    | 84    |
| 4                     | 61      | 73      | 77      | 82    | 81    | 78    | 97    | 79      | 86    | 65    |
| 5                     | 89      | 62      | 72      | 73    | 82    | 79    | 77    | 95      | 79    | 86    |
| K-5 Total             | 447     | 447     | 476     | 495   | 502   | 478   | 483   | 485     | 454   | 444   |

### ENROLLMENT PROJECTIONS – 10 YEARS

| PROJECTED ENROLLMENT |         |       |       |       |       |       |       |       |       |       |
|----------------------|---------|-------|-------|-------|-------|-------|-------|-------|-------|-------|
| NORTH STRATFIELD ES  | 14 - 15 | 15-16 | 16-17 | 17-18 | 18-19 | 19-20 | 20-21 | 21-22 | 22-23 | 23-24 |
| K                    | 65      | 63    | 69    | 69    | 69    | 69    | 69    | 68    | 68    | 68    |
| 1                    | 65      | 67    | 64    | 71    | 70    | 69    | 69    | 69    | 69    | 69    |
| 2                    | 64      | 65    | 65    | 63    | 70    | 70    | 69    | 69    | 69    | 69    |
| 3                    | 83      | 65    | 66    | 66    | 63    | 70    | 71    | 69    | 69    | 69    |
| 4                    | 85      | 84    | 65    | 68    | 68    | 63    | 72    | 72    | 71    | 71    |
| 5                    | 65      | 85    | 83    | 65    | 67    | 67    | 62    | 71    | 71    | 70    |
| K-5 Total            | 427     | 429   | 412   | 402   | 407   | 408   | 412   | 418   | 417   | 416   |



## Elementary Historical Enrollment - by Grade Level



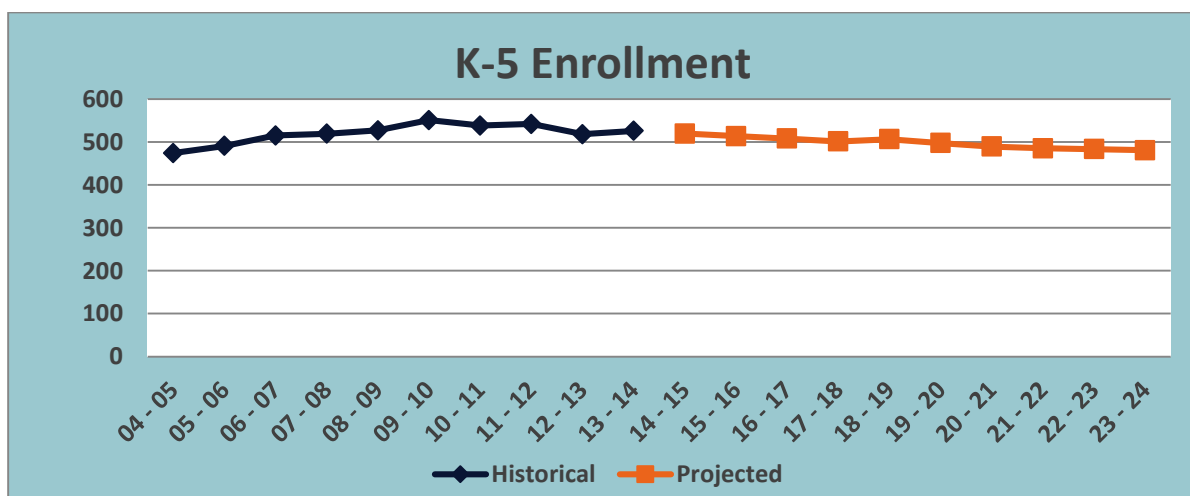
## OSBORN HILL ELEMENTARY

### ENROLLMENT HISTORY – 10 YEARS

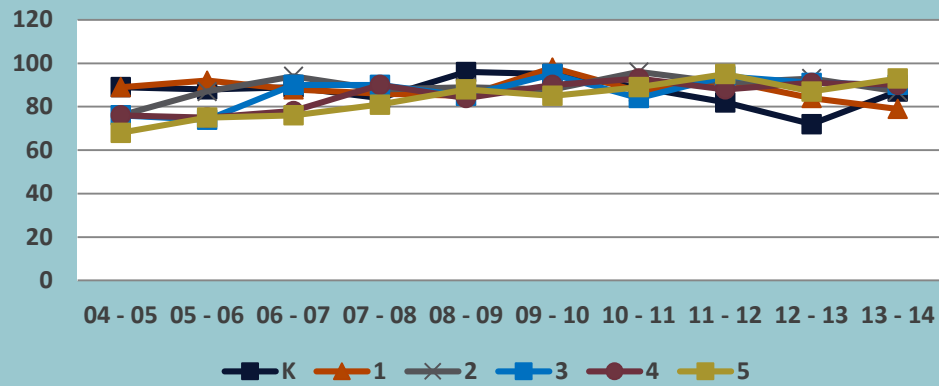
| HISTORICAL ENROLLMENT |            |            |            |            |            |            |            |            |            |            |
|-----------------------|------------|------------|------------|------------|------------|------------|------------|------------|------------|------------|
| OSBORN HILL ES        | 04 - 05    | 05 - 06    | 06 - 07    | 07-08      | 08-09      | 09-10      | 10-11      | 11 - 12    | 12-13      | 13-14      |
| <b>K</b>              | 89         | 88         | 89         | 84         | 96         | 95         | 89         | 82         | 72         | 87         |
| <b>1</b>              | 89         | 92         | 88         | 86         | 85         | 98         | 87         | 92         | 84         | 79         |
| <b>2</b>              | 76         | 87         | 94         | 88         | 89         | 88         | 96         | 91         | 93         | 87         |
| <b>3</b>              | 76         | 74         | 90         | 90         | 85         | 95         | 84         | 94         | 91         | 90         |
| <b>4</b>              | 76         | 75         | 78         | 90         | 84         | 90         | 93         | 88         | 91         | 90         |
| <b>5</b>              | 68         | 75         | 76         | 81         | 88         | 85         | 89         | 95         | 87         | 93         |
| <b>K-5 Total</b>      | <b>474</b> | <b>491</b> | <b>515</b> | <b>519</b> | <b>527</b> | <b>551</b> | <b>538</b> | <b>542</b> | <b>518</b> | <b>526</b> |

### ENROLLMENT PROJECTIONS – 10 YEARS

| PROJECTED ENROLLMENT |            |            |            |            |            |            |            |            |            |            |
|----------------------|------------|------------|------------|------------|------------|------------|------------|------------|------------|------------|
| OSBORN HILL ES       | 14 - 15    | 15-16      | 16-17      | 17-18      | 18-19      | 19-20      | 20-21      | 21-22      | 22-23      | 23-24      |
| <b>K</b>             | 82         | 80         | 80         | 79         | 79         | 79         | 79         | 79         | 78         | 78         |
| <b>1</b>             | 89         | 87         | 84         | 81         | 81         | 81         | 80         | 80         | 80         | 79         |
| <b>2</b>             | 79         | 92         | 90         | 86         | 83         | 83         | 82         | 81         | 81         | 81         |
| <b>3</b>             | 88         | 78         | 90         | 88         | 85         | 82         | 82         | 82         | 81         | 80         |
| <b>4</b>             | 91         | 86         | 78         | 90         | 88         | 85         | 82         | 82         | 82         | 81         |
| <b>5</b>             | 90         | 91         | 87         | 78         | 90         | 88         | 85         | 82         | 82         | 82         |
| <b>K-5 Total</b>     | <b>519</b> | <b>514</b> | <b>509</b> | <b>502</b> | <b>506</b> | <b>498</b> | <b>490</b> | <b>486</b> | <b>484</b> | <b>481</b> |



## Elementary Historical Enrollment - by Grade Level



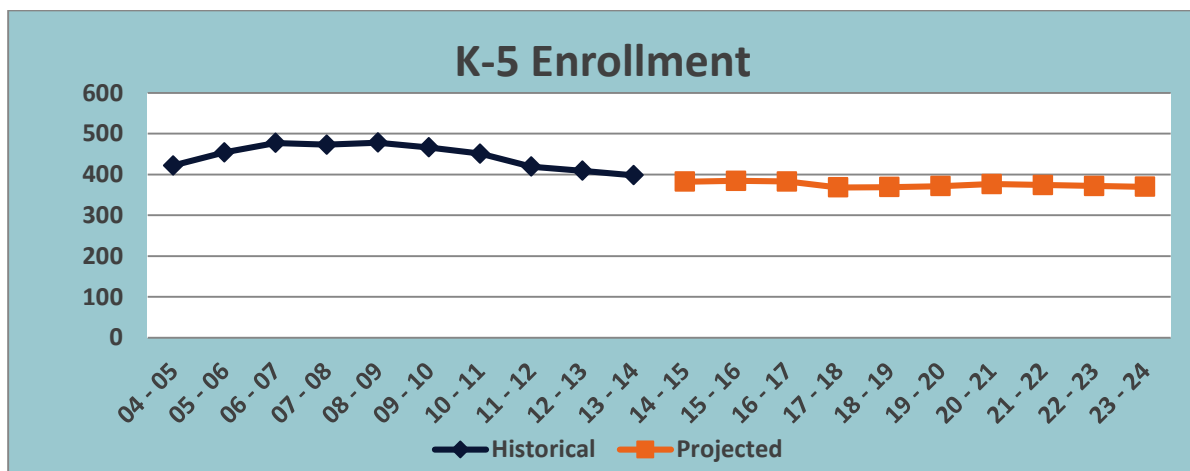
## RIVERFIELD ELEMENTARY

### ENROLLMENT HISTORY – 10 YEARS

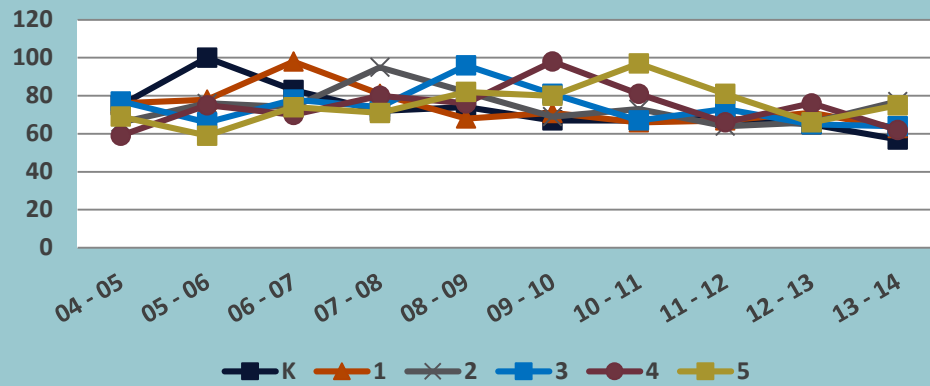
| HISTORICAL ENROLLMENT |            |            |            |            |            |            |            |            |            |            |
|-----------------------|------------|------------|------------|------------|------------|------------|------------|------------|------------|------------|
| RIVERFIELD ES         | 04 - 05    | 05 - 06    | 06 - 07    | 07-08      | 08-09      | 09-10      | 10-11      | 11 - 12    | 12-13      | 13-14      |
| <b>K</b>              | 75         | 100        | 83         | 72         | 74         | 67         | 67         | 68         | 65         | 57         |
| <b>1</b>              | 76         | 78         | 98         | 81         | 68         | 71         | 66         | 67         | 71         | 63         |
| <b>2</b>              | 66         | 76         | 74         | 95         | 82         | 69         | 73         | 64         | 66         | 77         |
| <b>3</b>              | 77         | 66         | 78         | 74         | 96         | 81         | 67         | 73         | 65         | 64         |
| <b>4</b>              | 59         | 75         | 70         | 80         | 76         | 98         | 81         | 66         | 76         | 62         |
| <b>5</b>              | 69         | 59         | 74         | 71         | 82         | 80         | 97         | 81         | 66         | 75         |
| <b>K-5 Total</b>      | <b>422</b> | <b>454</b> | <b>477</b> | <b>473</b> | <b>478</b> | <b>466</b> | <b>451</b> | <b>419</b> | <b>409</b> | <b>398</b> |

### ENROLLMENT PROJECTIONS – 10 YEARS

| PROJECTED ENROLLMENT |            |            |            |            |            |            |            |            |            |            |
|----------------------|------------|------------|------------|------------|------------|------------|------------|------------|------------|------------|
| RIVERFIELD ES        | 14 - 15    | 15-16      | 16-17      | 17-18      | 18-19      | 19-20      | 20-21      | 21-22      | 22-23      | 23-24      |
| <b>K</b>             | 56         | 63         | 63         | 63         | 62         | 62         | 62         | 62         | 62         | 62         |
| <b>1</b>             | 59         | 56         | 63         | 63         | 62         | 61         | 61         | 61         | 61         | 61         |
| <b>2</b>             | 63         | 61         | 57         | 64         | 64         | 63         | 62         | 61         | 61         | 61         |
| <b>3</b>             | 78         | 62         | 60         | 56         | 64         | 63         | 63         | 62         | 61         | 61         |
| <b>4</b>             | 65         | 78         | 62         | 60         | 56         | 64         | 64         | 64         | 62         | 62         |
| <b>5</b>             | 62         | 64         | 77         | 62         | 60         | 57         | 65         | 64         | 64         | 63         |
| <b>K-5 Total</b>     | <b>383</b> | <b>384</b> | <b>382</b> | <b>368</b> | <b>368</b> | <b>370</b> | <b>377</b> | <b>374</b> | <b>371</b> | <b>370</b> |



## Elementary Historical Enrollment - by Grade Level





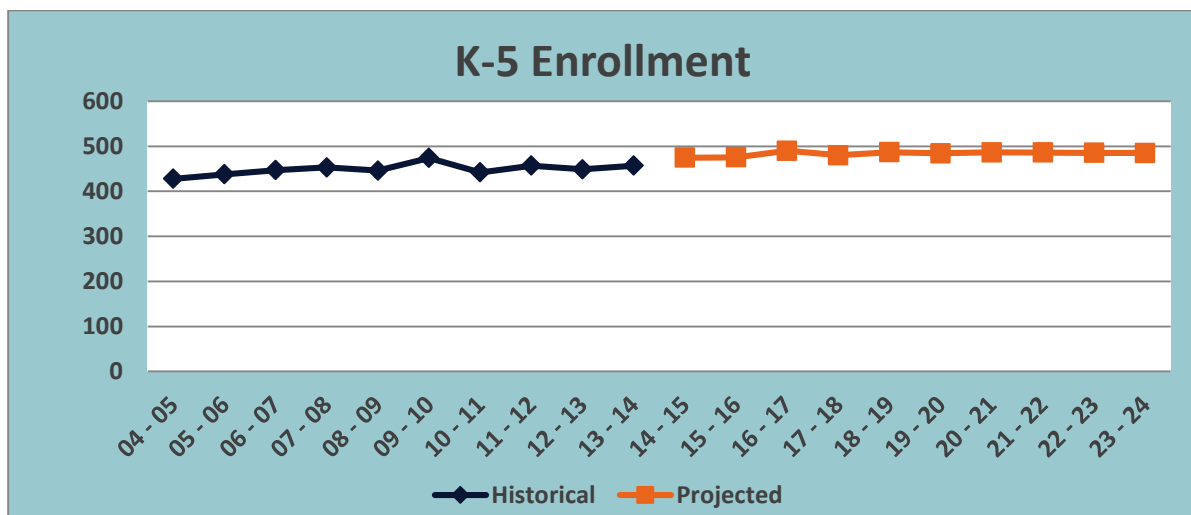
## SHERMAN ELEMENTARY

### ENROLLMENT HISTORY – 10 YEARS

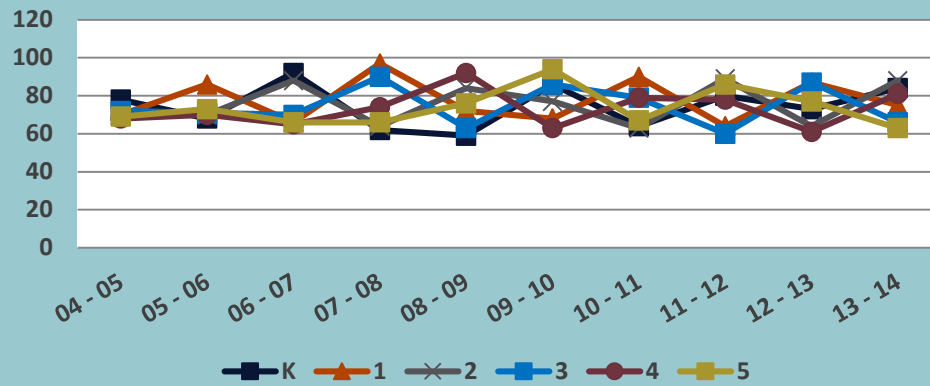
| HISTORICAL ENROLLMENT |            |            |            |            |            |            |            |            |            |            |
|-----------------------|------------|------------|------------|------------|------------|------------|------------|------------|------------|------------|
| SHERMAN<br>ES         | 04 - 05    | 05 - 06    | 06 - 07    | 07-08      | 08-09      | 09-10      | 10-11      | 11 - 12    | 12-13      | 13-14      |
| <b>K</b>              | 78         | 68         | 92         | 62         | 59         | 86         | 64         | 80         | 73         | 84         |
| <b>1</b>              | 70         | 86         | 66         | 97         | 72         | 68         | 90         | 64         | 87         | 75         |
| <b>2</b>              | 71         | 70         | 88         | 64         | 84         | 77         | 63         | 89         | 64         | 88         |
| <b>3</b>              | 72         | 71         | 70         | 90         | 63         | 86         | 79         | 60         | 87         | 66         |
| <b>4</b>              | 68         | 70         | 65         | 74         | 92         | 63         | 79         | 78         | 61         | 81         |
| <b>5</b>              | 69         | 73         | 66         | 66         | 76         | 94         | 67         | 86         | 77         | 63         |
| <b>K-5 Total</b>      | <b>428</b> | <b>438</b> | <b>447</b> | <b>453</b> | <b>446</b> | <b>474</b> | <b>442</b> | <b>457</b> | <b>449</b> | <b>457</b> |

### ENROLLMENT PROJECTIONS – 10 YEARS

| PROJECTED ENROLLMENT |            |            |            |            |            |            |            |            |            |            |
|----------------------|------------|------------|------------|------------|------------|------------|------------|------------|------------|------------|
| SHERMAN<br>ES        | 14 - 15    | 15-16      | 16-17      | 17-18      | 18-19      | 19-20      | 20-21      | 21-22      | 22-23      | 23-24      |
| <b>K</b>             | 77         | 79         | 78         | 78         | 78         | 78         | 78         | 77         | 77         | 77         |
| <b>1</b>             | 86         | 81         | 82         | 82         | 83         | 84         | 84         | 82         | 82         | 82         |
| <b>2</b>             | 75         | 87         | 81         | 80         | 81         | 81         | 82         | 82         | 81         | 81         |
| <b>3</b>             | 89         | 75         | 86         | 81         | 80         | 81         | 81         | 82         | 82         | 81         |
| <b>4</b>             | 67         | 87         | 74         | 83         | 78         | 79         | 81         | 80         | 81         | 81         |
| <b>5</b>             | 81         | 67         | 90         | 77         | 86         | 81         | 81         | 82         | 82         | 83         |
| <b>K-5 Total</b>     | <b>475</b> | <b>476</b> | <b>491</b> | <b>481</b> | <b>486</b> | <b>484</b> | <b>487</b> | <b>485</b> | <b>485</b> | <b>485</b> |



## Elementary Historical Enrollment - by Grade Level



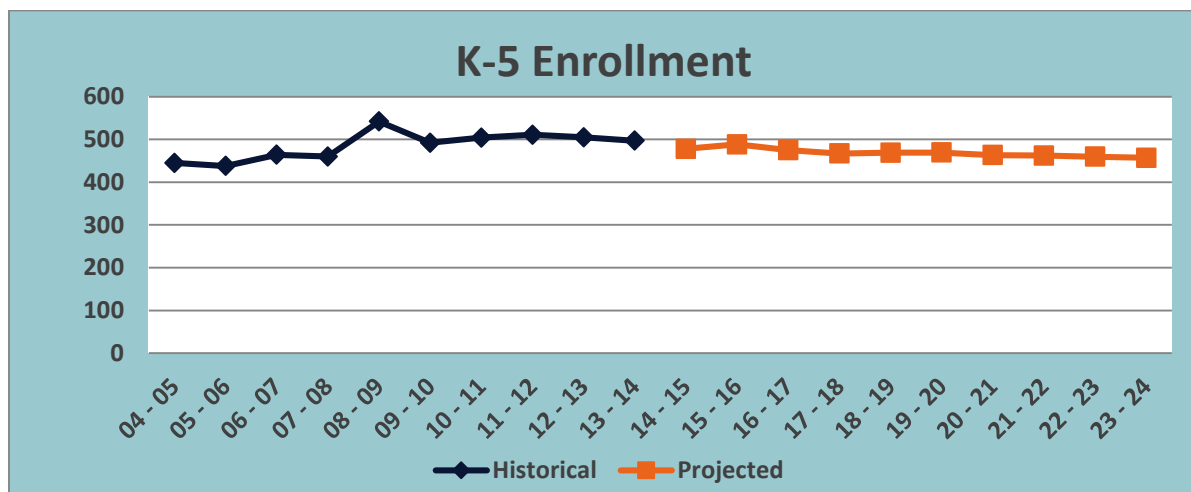
## STRATFIELD ELEMENTARY

### ENROLLMENT HISTORY – 10 YEARS

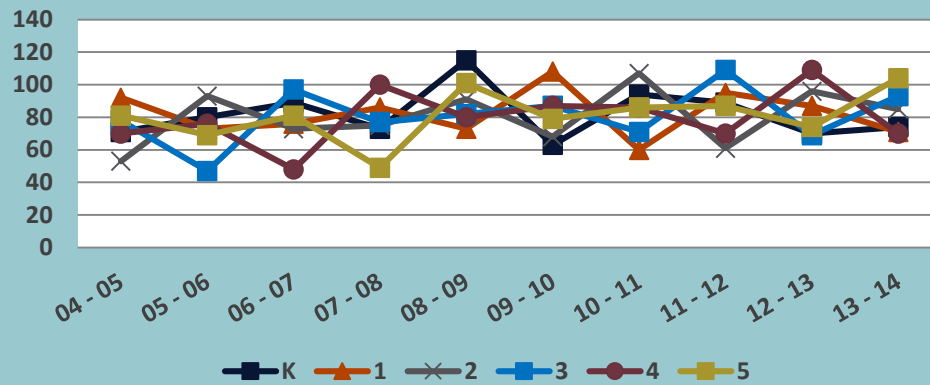
| HISTORICAL ENROLLMENT |            |            |            |            |            |            |            |            |            |            |
|-----------------------|------------|------------|------------|------------|------------|------------|------------|------------|------------|------------|
| STRATFIELD ES         | 04 - 05    | 05 - 06    | 06 - 07    | 07-08      | 08-09      | 09-10      | 10-11      | 11 - 12    | 12-13      | 13-14      |
| <b>K</b>              | 71         | 80         | 89         | 73         | 115        | 63         | 94         | 89         | 70         | 74         |
| <b>1</b>              | 92         | 73         | 76         | 86         | 73         | 108        | 60         | 95         | 87         | 71         |
| <b>2</b>              | 53         | 93         | 73         | 75         | 91         | 68         | 107        | 61         | 96         | 85         |
| <b>3</b>              | 78         | 47         | 97         | 77         | 82         | 87         | 71         | 109        | 69         | 93         |
| <b>4</b>              | 70         | 76         | 48         | 100        | 80         | 87         | 86         | 70         | 109        | 70         |
| <b>5</b>              | 81         | 69         | 81         | 49         | 101        | 79         | 86         | 87         | 74         | 104        |
| <b>K-5 Total</b>      | <b>445</b> | <b>438</b> | <b>464</b> | <b>460</b> | <b>542</b> | <b>492</b> | <b>504</b> | <b>511</b> | <b>505</b> | <b>497</b> |

### ENROLLMENT PROJECTIONS – 10 YEARS

| PROJECTED ENROLLMENT |            |            |            |            |            |            |            |            |            |            |
|----------------------|------------|------------|------------|------------|------------|------------|------------|------------|------------|------------|
| STRATFIELD ES        | 14 - 15    | 15-16      | 16-17      | 17-18      | 18-19      | 19-20      | 20-21      | 21-22      | 22-23      | 23-24      |
| <b>K</b>             | 81         | 77         | 77         | 77         | 77         | 76         | 76         | 76         | 76         | 76         |
| <b>1</b>             | 76         | 80         | 77         | 76         | 75         | 75         | 75         | 74         | 75         | 74         |
| <b>2</b>             | 71         | 76         | 81         | 77         | 75         | 75         | 75         | 75         | 74         | 74         |
| <b>3</b>             | 86         | 74         | 79         | 84         | 79         | 78         | 78         | 78         | 76         | 76         |
| <b>4</b>             | 94         | 86         | 74         | 78         | 85         | 80         | 79         | 79         | 79         | 77         |
| <b>5</b>             | 70         | 94         | 87         | 75         | 78         | 85         | 81         | 80         | 80         | 80         |
| <b>K-5 Total</b>     | <b>478</b> | <b>487</b> | <b>475</b> | <b>467</b> | <b>469</b> | <b>469</b> | <b>464</b> | <b>462</b> | <b>460</b> | <b>457</b> |



## Elementary Historical Enrollment - by Grade Level



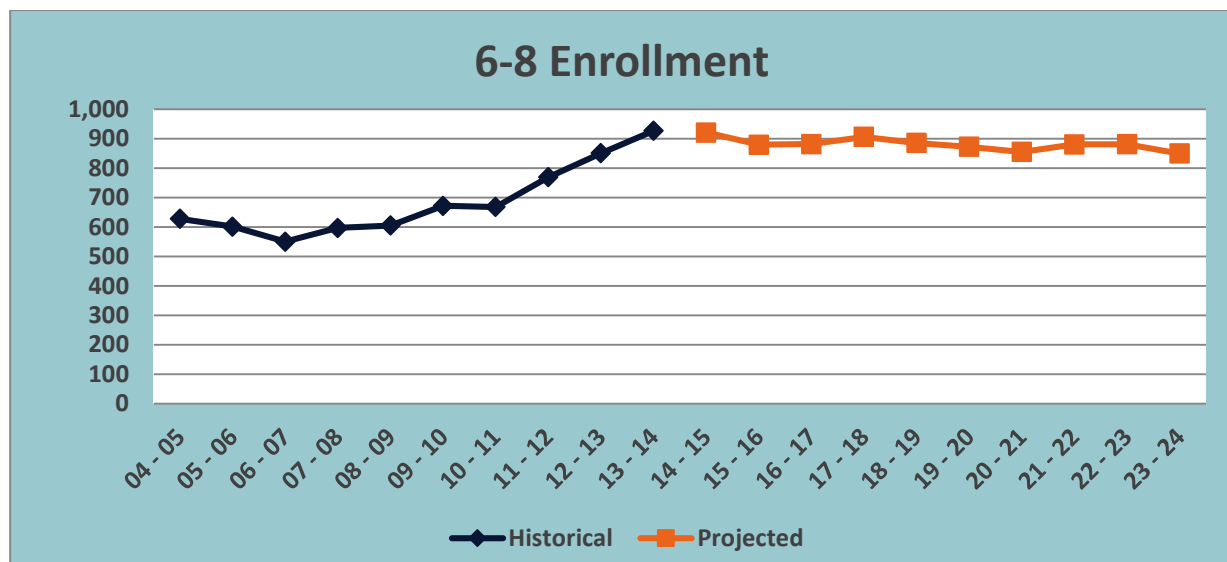
## MIDDLE SCHOOLS FAIRFIELD WOODS MIDDLE

### ENROLLMENT HISTORY – 10 YEARS

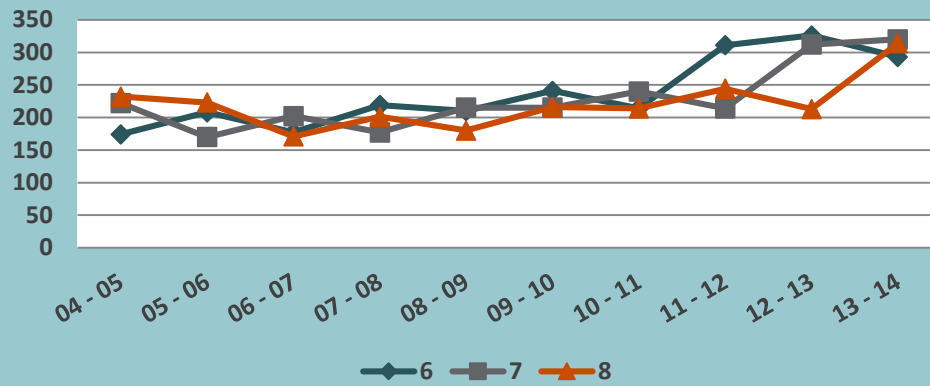
| HISTORICAL ENROLLMENT |         |         |         |       |       |       |       |         |       |       |
|-----------------------|---------|---------|---------|-------|-------|-------|-------|---------|-------|-------|
| FAIRFIELD WOODS MS    | 04 - 05 | 05 - 06 | 06 - 07 | 07-08 | 08-09 | 09-10 | 10-11 | 11 - 12 | 12-13 | 13-14 |
| 6                     | 174     | 208     | 177     | 219   | 210   | 241   | 214   | 311     | 326   | 293   |
| 7                     | 222     | 170     | 202     | 177   | 215   | 215   | 240   | 214     | 312   | 320   |
| 8                     | 232     | 223     | 171     | 201   | 180   | 216   | 214   | 244     | 213   | 314   |
| 6-8 Total             | 628     | 601     | 550     | 597   | 605   | 672   | 668   | 769     | 851   | 927   |

### ENROLLMENT PROJECTIONS – 10 YEARS

| PROJECTED ENROLLMENT |         |       |       |       |       |       |       |       |       |       |
|----------------------|---------|-------|-------|-------|-------|-------|-------|-------|-------|-------|
| FAIRFIELD WOODS MS   | 14 - 15 | 15-16 | 16-17 | 17-18 | 18-19 | 19-20 | 20-21 | 21-22 | 22-23 | 23-24 |
| 6                    | 304     | 278   | 295   | 329   | 257   | 282   | 313   | 283   | 282   | 281   |
| 7                    | 293     | 305   | 279   | 296   | 330   | 258   | 282   | 313   | 283   | 282   |
| 8                    | 323     | 296   | 308   | 282   | 299   | 333   | 260   | 285   | 316   | 286   |
| 6-8 Total            | 920     | 879   | 882   | 907   | 886   | 873   | 855   | 881   | 881   | 849   |



## Middle School Historical Enrollment - by Grade Level



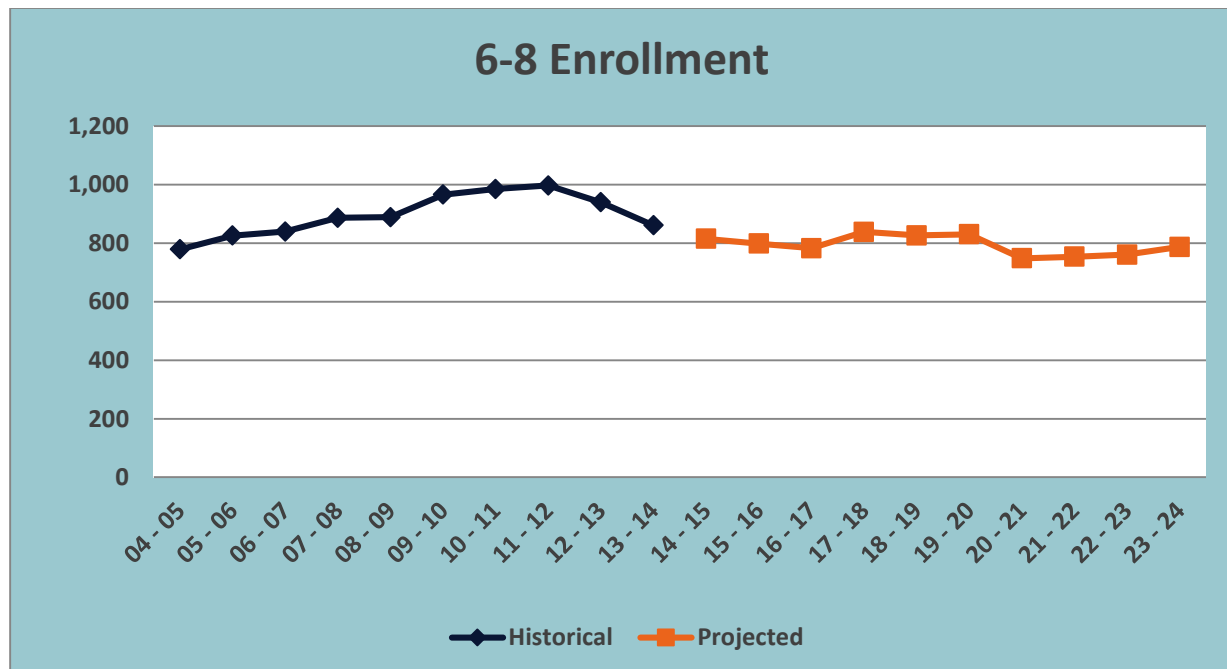
## ROGER LUDLOWE MIDDLE

### ENROLLMENT HISTORY – 10 YEARS

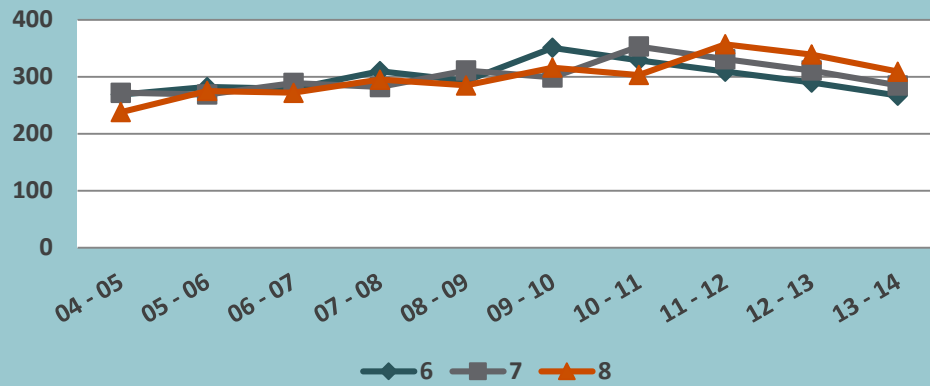
| HISTORICAL ENROLLMENT |            |            |            |            |            |            |            |            |            |            |
|-----------------------|------------|------------|------------|------------|------------|------------|------------|------------|------------|------------|
| LUDLOWE MS            | 04 - 05    | 05 - 06    | 06 - 07    | 07-08      | 08-09      | 09-10      | 10-11      | 11 - 12    | 12-13      | 13-14      |
| <b>6</b>              | 269        | 282        | 279        | 310        | 293        | 351        | 329        | 309        | 290        | 267        |
| <b>7</b>              | 272        | 269        | 289        | 282        | 311        | 299        | 353        | 331        | 311        | 285        |
| <b>8</b>              | 238        | 275        | 272        | 295        | 285        | 316        | 303        | 357        | 339        | 309        |
| <b>6-8 Total</b>      | <b>779</b> | <b>826</b> | <b>840</b> | <b>887</b> | <b>889</b> | <b>966</b> | <b>985</b> | <b>997</b> | <b>940</b> | <b>861</b> |

### ENROLLMENT PROJECTIONS – 10 YEARS

| PROJECTED ENROLLMENT |            |            |            |            |            |            |            |            |            |            |
|----------------------|------------|------------|------------|------------|------------|------------|------------|------------|------------|------------|
| LUDLOWE MS           | 14 - 15    | 15-16      | 16-17      | 17-18      | 18-19      | 19-20      | 20-21      | 21-22      | 22-23      | 23-24      |
| <b>6</b>             | 260        | 268        | 251        | 316        | 256        | 254        | 235        | 262        | 261        | 260        |
| <b>7</b>             | 267        | 260        | 269        | 252        | 316        | 257        | 255        | 235        | 262        | 262        |
| <b>8</b>             | 288        | 270        | 263        | 271        | 254        | 319        | 259        | 257        | 237        | 265        |
| <b>6-8 Total</b>     | <b>815</b> | <b>798</b> | <b>783</b> | <b>839</b> | <b>826</b> | <b>830</b> | <b>749</b> | <b>754</b> | <b>760</b> | <b>787</b> |



## Middle School Historical Enrollment - by Grade Level





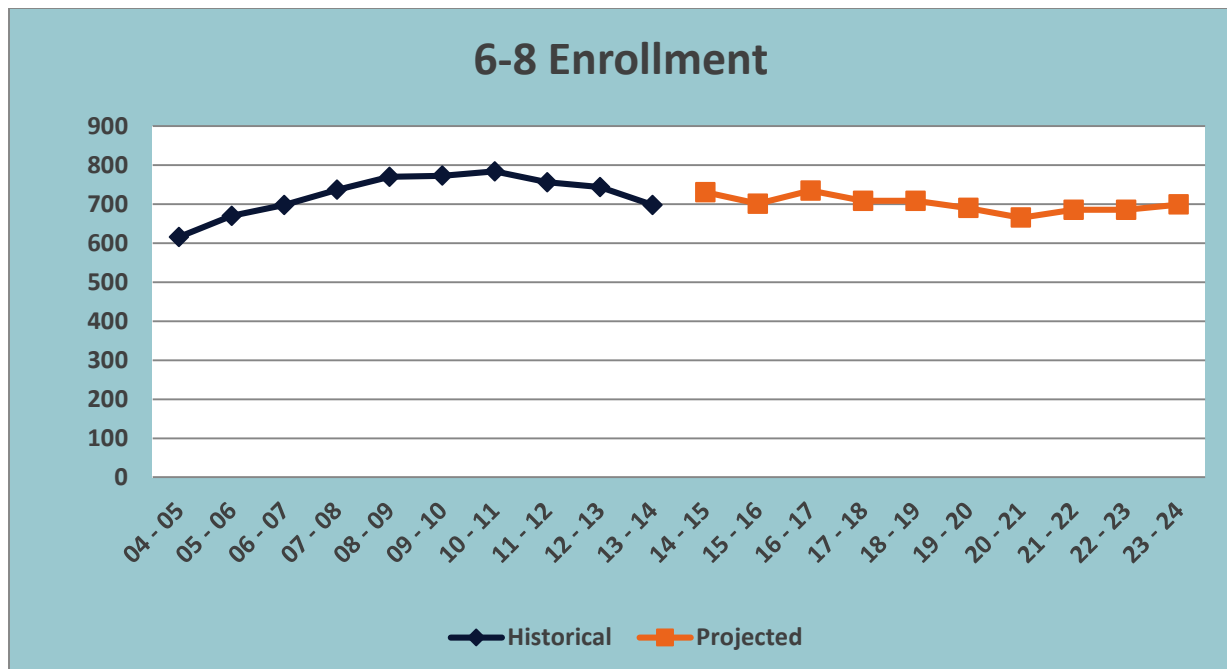
## TOMLINSON MIDDLE

### ENROLLMENT HISTORY – 10 YEARS

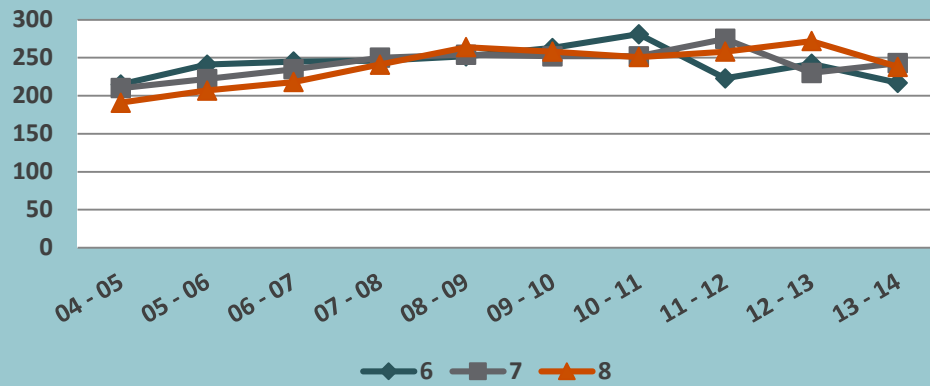
| HISTORICAL ENROLLMENT |            |            |            |            |            |            |            |            |            |            |
|-----------------------|------------|------------|------------|------------|------------|------------|------------|------------|------------|------------|
| TOMLINSON MS          | 04 - 05    | 05 - 06    | 06 - 07    | 07-08      | 08-09      | 09-10      | 10-11      | 11 - 12    | 12-13      | 13-14      |
| <b>6</b>              | 215        | 241        | 245        | 246        | 252        | 263        | 281        | 223        | 242        | 217        |
| <b>7</b>              | 210        | 222        | 235        | 250        | 254        | 252        | 252        | 275        | 230        | 243        |
| <b>8</b>              | 191        | 207        | 218        | 241        | 264        | 258        | 251        | 258        | 272        | 238        |
| <b>6-8 Total</b>      | <b>616</b> | <b>670</b> | <b>698</b> | <b>737</b> | <b>770</b> | <b>773</b> | <b>784</b> | <b>756</b> | <b>744</b> | <b>698</b> |

### ENROLLMENT PROJECTIONS – 10 YEARS

| PROJECTED ENROLLMENT |            |            |            |            |            |            |            |            |            |            |
|----------------------|------------|------------|------------|------------|------------|------------|------------|------------|------------|------------|
| TOMLINSON MS         | 14 - 15    | 15-16      | 16-17      | 17-18      | 18-19      | 19-20      | 20-21      | 21-22      | 22-23      | 23-24      |
| <b>6</b>             | 268        | 213        | 250        | 242        | 213        | 232        | 218        | 233        | 232        | 231        |
| <b>7</b>             | 217        | 268        | 214        | 251        | 243        | 213        | 232        | 218        | 233        | 232        |
| <b>8</b>             | 245        | 220        | 271        | 216        | 253        | 245        | 215        | 234        | 221        | 235        |
| <b>6-8 Total</b>     | <b>730</b> | <b>701</b> | <b>735</b> | <b>709</b> | <b>709</b> | <b>690</b> | <b>665</b> | <b>685</b> | <b>686</b> | <b>698</b> |



## Middle School Historical Enrollment - by Grade Level



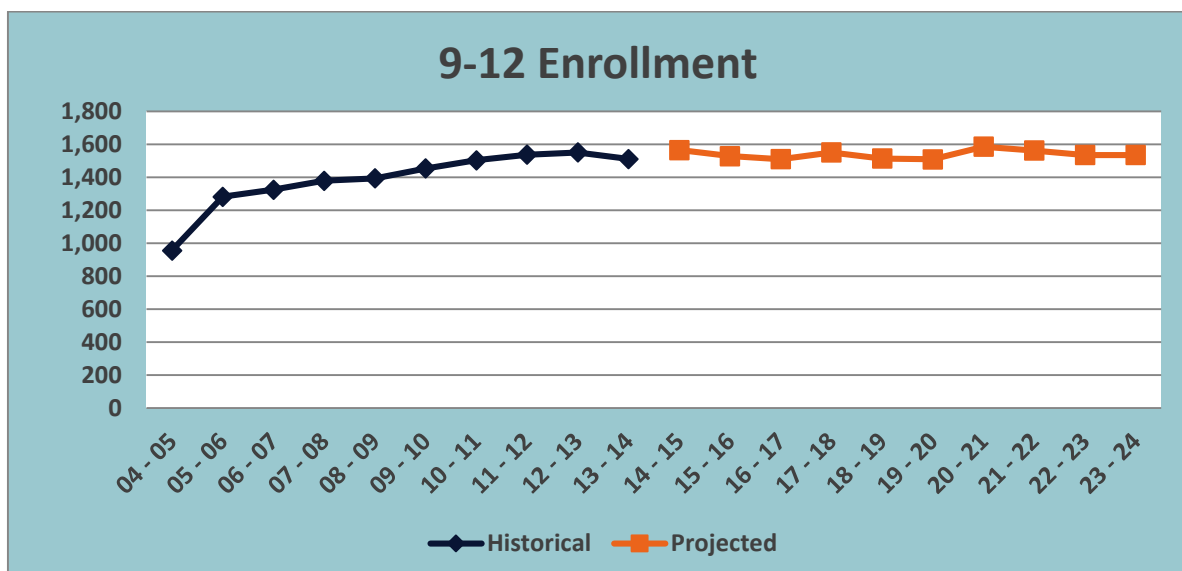
## HIGH SCHOOLS FAIRFIELD LUDLOWE HIGH

### ENROLLMENT HISTORY – 10 YEARS

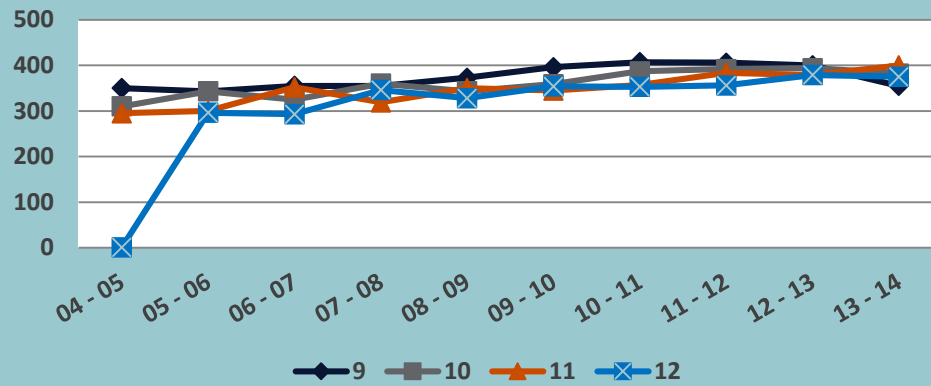
| HISTORICAL ENROLLMENT |            |              |              |              |              |              |              |              |              |              |
|-----------------------|------------|--------------|--------------|--------------|--------------|--------------|--------------|--------------|--------------|--------------|
| LUDLOWE HS            | 04 - 05    | 05 - 06      | 06 - 07      | 07-08        | 08-09        | 09-10        | 10-11        | 11 - 12      | 12-13        | 13-14        |
| <b>9</b>              | 350        | 343          | 355          | 355          | 373          | 396          | 407          | 406          | 400          | 355          |
| <b>10</b>             | 310        | 343          | 325          | 360          | 343          | 359          | 387          | 392          | 394          | 382          |
| <b>11</b>             | 295        | 300          | 352          | 319          | 350          | 345          | 357          | 384          | 379          | 400          |
| <b>12</b>             | 1          | 296          | 293          | 346          | 328          | 354          | 353          | 356          | 379          | 375          |
| <b>9-12 Total</b>     | <b>956</b> | <b>1,282</b> | <b>1,325</b> | <b>1,380</b> | <b>1,394</b> | <b>1,454</b> | <b>1,504</b> | <b>1,538</b> | <b>1,552</b> | <b>1,512</b> |

### ENROLLMENT PROJECTIONS – 10 YEARS

| PROJECTED ENROLLMENT |              |              |              |              |              |              |              |              |              |              |
|----------------------|--------------|--------------|--------------|--------------|--------------|--------------|--------------|--------------|--------------|--------------|
| LUDLOWE HS           | 14 - 15      | 15-16        | 16-17        | 17-18        | 18-19        | 19-20        | 20-21        | 21-22        | 22-23        | 23-24        |
| <b>9</b>             | 443          | 387          | 378          | 394          | 400          | 381          | 456          | 370          | 370          | 382          |
| <b>10</b>            | 344          | 427          | 372          | 365          | 381          | 387          | 370          | 442          | 359          | 360          |
| <b>11</b>            | 379          | 341          | 423          | 369          | 363          | 377          | 383          | 368          | 438          | 356          |
| <b>12</b>            | 400          | 375          | 338          | 423          | 370          | 366          | 378          | 382          | 368          | 438          |
| <b>9-12 Total</b>    | <b>1,566</b> | <b>1,530</b> | <b>1,511</b> | <b>1,551</b> | <b>1,514</b> | <b>1,511</b> | <b>1,587</b> | <b>1,562</b> | <b>1,535</b> | <b>1,536</b> |



## High School Historical Enrollment - by Grade Level



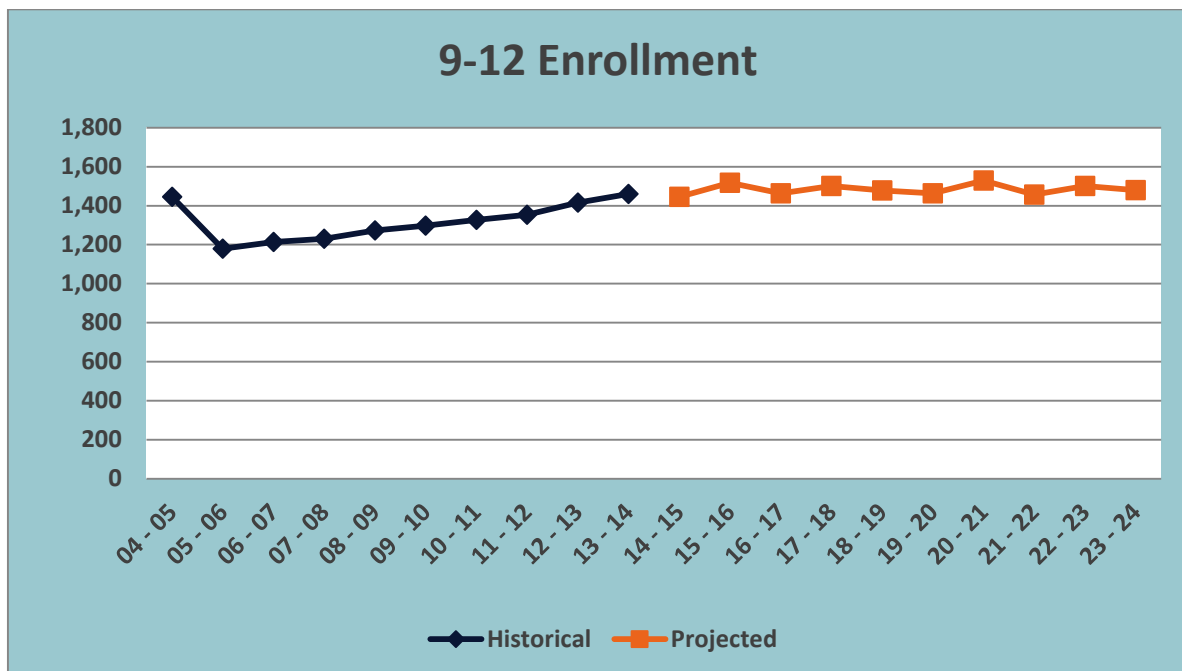
## FAIRFIELD WARDE HIGH

### ENROLLMENT HISTORY – 10 YEARS

| HISTORICAL ENROLLMENT |              |              |              |              |              |              |              |              |              |              |
|-----------------------|--------------|--------------|--------------|--------------|--------------|--------------|--------------|--------------|--------------|--------------|
| WARDE HS              | 04 - 05      | 05 - 06      | 06 - 07      | 07-08        | 08-09        | 09-10        | 10-11        | 11 - 12      | 12-13        | 13-14        |
| <b>9</b>              | 311          | 309          | 349          | 305          | 338          | 320          | 372          | 341          | 414          | 377          |
| <b>10</b>             | 291          | 295          | 293          | 341          | 303          | 331          | 317          | 354          | 330          | 396          |
| <b>11</b>             | 303          | 286          | 290          | 295          | 336          | 301          | 331          | 319          | 360          | 324          |
| <b>12</b>             | 540          | 290          | 281          | 290          | 296          | 345          | 307          | 339          | 312          | 363          |
| <b>9-12 Total</b>     | <b>1,445</b> | <b>1,180</b> | <b>1,213</b> | <b>1,231</b> | <b>1,273</b> | <b>1,297</b> | <b>1,327</b> | <b>1,353</b> | <b>1,416</b> | <b>1,460</b> |

### ENROLLMENT PROJECTIONS – 10 YEARS

| PROJECTED ENROLLMENT |              |              |              |              |              |              |              |              |              |              |
|----------------------|--------------|--------------|--------------|--------------|--------------|--------------|--------------|--------------|--------------|--------------|
| WARDE HS             | 14 - 15      | 15-16        | 16-17        | 17-18        | 18-19        | 19-20        | 20-21        | 21-22        | 22-23        | 23-24        |
| <b>9</b>             | 362          | 414          | 351          | 412          | 336          | 395          | 415          | 342          | 386          | 377          |
| <b>10</b>            | 365          | 348          | 397          | 340          | 400          | 327          | 385          | 403          | 331          | 373          |
| <b>11</b>            | 393          | 365          | 348          | 397          | 339          | 399          | 327          | 383          | 401          | 329          |
| <b>12</b>            | 324          | 391          | 366          | 351          | 402          | 343          | 402          | 329          | 383          | 401          |
| <b>9-12 Total</b>    | <b>1,444</b> | <b>1,518</b> | <b>1,462</b> | <b>1,500</b> | <b>1,477</b> | <b>1,464</b> | <b>1,529</b> | <b>1,457</b> | <b>1,501</b> | <b>1,480</b> |



## High School Historical Enrollment - by Grade Level

